

SERIE 059,060,090,190

COUPLINGS, MULTICOUPLINGS & MOULD COOLING PRODUCTS

KUPPLUNGEN, MULTIKUPPLUNGEN & KÜHLUNGSELEMENTE FÜR WERKZEUGE



**Interchangeability - Kompatibilität**  
HASCO, DYROS, EOC, PARADISI ( EURO CONNECTOR )

**Temperature Range - Temperaturbereich**  
-20°C +100°C (-40°F +250°F) Nitril (N)  
-20°C +200°C (-40°F +390°F) Viton (V)

**Working Pressure - Betriebsdruck**  
0 - 25 bar TST 059  
0 - 25 bar TST 060  
0 - 25 bar TST 090  
0 - 25 bar TST 190

**Flow capacity - Nennweiten**  
NW 2.7 TST 059  
NW 6 TST 060  
NW 9 TST 090  
NW 13 TST 190

**Standard version - Standardversion**  
Brass - Messing  
Viton (V)

**Options - Optionen**  
K - Chrome plated - Verchromt  
N - Nickel plated - Vernickelt  
S - Stainless Steel - Edelstahl

For optional orders please add the symbol of your option end of the order no.  
Bei Bestellungen Kennbuchstabe bitte hinzufügen ( Bestellungen: 090 EG 14-K-N )

**Material - Material**

Coupler Body- Kupplungsgrundkörper : Brass - Messing  
Sleeve - Hülse : Brass - Messing  
Valve - Ventil : Brass - Messing  
Springs - Federn : Stainless Steel - Edelstahl  
Locking O-Ring- Sprengring : Stainless Steel - Edelstahl  
Balls - Kugeln : Stainless Steel - Edelstahl  
Seals - Dichtungen : Viton (V)  
Plug - Nippel : Brass - Messing

**Using Area:**

- On cooling system of plastic zamak, brass and aluminium injection moulds
- On cleaning and washing systems of machines
  - On hot oil - water lines connection
  - All industries
  - On steam line

**Anwendungsbereiche:**

- An Kühlsysteme für Kunststoff-, Zinkdruckguß, Messing- und Aluminium - Kokillenformen
- Reinigungs- und Waschsysteeme von Maschinen
  - Temperierung ( Wasser/Öl )
  - Alle Industriezweige
  - Dampfleitungen



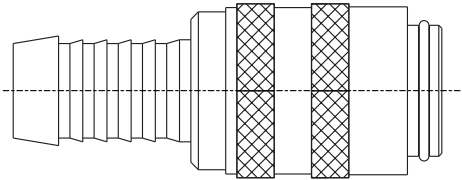
**COUPLINGS, MULTICOUPLINGS & MOULD COOLING PRODUCTS**

KUPPLUNGEN, MULTIKUPPLUNGEN & KÜHLUNGSELEMENTE FÜR WERKZEUGE

**SERIE 059,060,090,190**



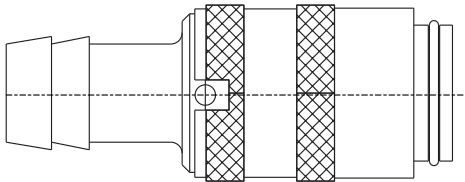
**Options - Optionen**



**Hose Tail Options / Schlauchanschluss Optionen**

For this type hose tail please add the FHG symbol of your option in side of the order no. For example CSK 090 **FHG 13**

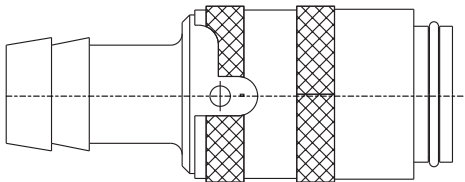
Für diesen Schlauchanschluss fügen Sie FHG zur Artikelnummer hinzu. Z.B. CSK 090 **FHG 13**



**E1 Type Safety coupler / E1 Sicherheitsverriegelung**

Please add the symbol E1 add the symbol of your option end of the order no. For example CSK 090 - 13 - E1

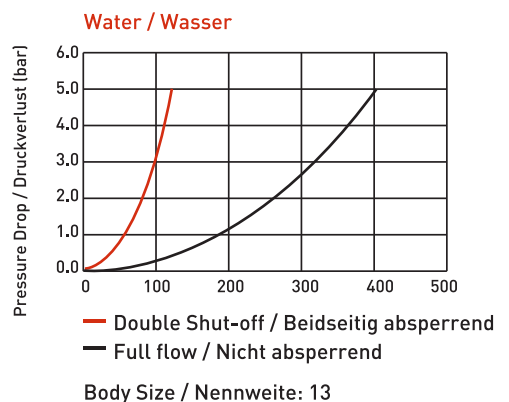
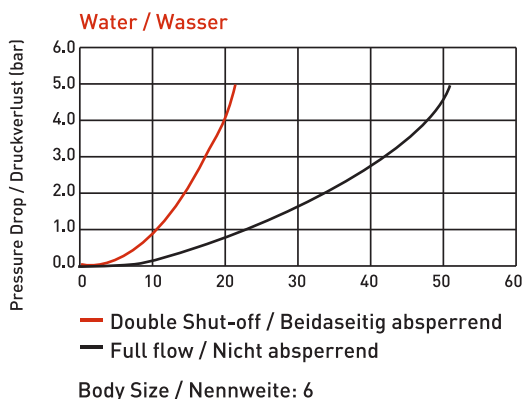
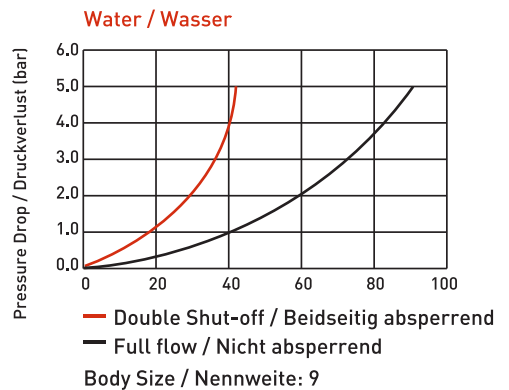
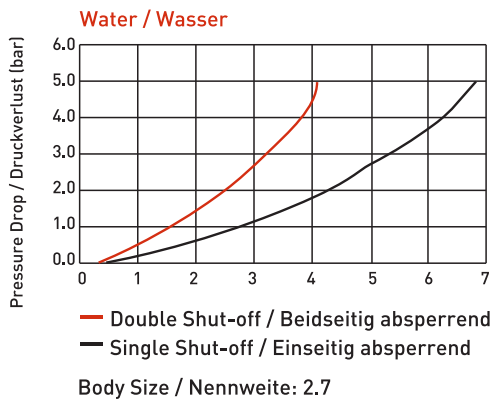
Für diese Option fügen Sie E1 zur Artikelnummer hinzu. Z.B. CSK 090 - 13 - E1



**E2 Type Safety coupler / E2 Sicherheitsverriegelung**

Please add the symbol E2 add the symbol of your option end of the order no. For example CSK 090 - 13 - E2

Für diese Option fügen Sie E2 zur Artikelnummer hinzu. Z.B. CSK 090 - 13 - E2





**COUPLINGS, MULTICOUPLINGS & MOULD COOLING PRODUCTS**

**SERIE 059,060,090,190**

**KUPPLUNGEN, MULTIKUPPLUNGEN & KÜHLUNGSELEMENTE FÜR WERKZEUGE**



With Valve / Mit Ventil  
Order No / Bestellnr.

Without Valve / Ohne Ventil  
Order No / Bestellnr.

Serie

d1

d2

d3

d4

L

LI

CSK 059 - 05

SK 059 - 05

2.7

5 - 3/16"

2.7

10

5

35

13.5

CSK 060 - 06

SK 060 - 06

6

6 - 1/4"

4

17.3

9

47.5

17.3

CSK 060 - 08

SK 060 - 08

6

8 - 5/16"

6

17.3

9

47.5

17.3

CSK 060 - 09

SK 060 - 09

6

9 - 5/14"

7

17.3

9

47.5

17.3

CSK 060 - 10

SK 060 - 10

6

10 - 3/8"

8

17.3

9

47.5

17.3

CSK 060 - 13

SK 060 - 13

6

13 - 1/2"

9

17.3

9

53.5

23.3

CSK 090 - 10

SK 090 - 10

9

10 - 3/8"

8

23

13.5

55.1

23.3

CSK 090 - 13

SK 090 - 13

9

13 - 1/2"

10

23

13.5

59.1

23.3

CSK 190 - 19

SK 190 - 19

13

19 - 3/4"

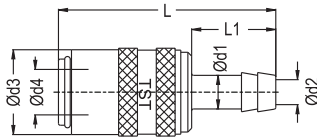
13

32

19

90

32



Standard hose tail socket  
Kupplung mit gerader Standard - Schlauchtülle



With Valve / Mit Ventil  
Order No / Bestellnr.

Without Valve / Ohne Ventil  
Order No / Bestellnr.

Serie

d1

d2

d3

d4

L

LI

CSK 059 - 05 - 45°

SK 059 - 05 - 45°

2.7

5 - 3/16"

2.7

10

5

29.5

13.5

CSK 060 - 06 - 45°

SK 060 - 06 - 45°

6

6.7 - 1/4"

4.5

17.3

9

42

19

CSK 060 - 08 - 45°

SK 060 - 08 - 45°

6

8 - 5/16"

5.5

17.3

9

42

19

CSK 060 - 09 - 45°

SK 060 - 09 - 45°

6

9 - 5/14"

6

17.3

9

42

19

CSK 060 - 10 - 45°

SK 060 - 10 - 45°

6

10 - 3/8"

7

17.3

9

42

21

CSK 090 - 10 - 45°

SK 090 - 10 - 45°

9

10 - 3/8"

7.5

23

13.5

52.3

21

CSK 090 - 13 - 45°

SK 090 - 13 - 45°

9

13 - 1/2"

10

23

13.5

41.3

26

CSK 190 - 19 - 45°

SK 190 - 19 - 45°

13

19 - 3/4"

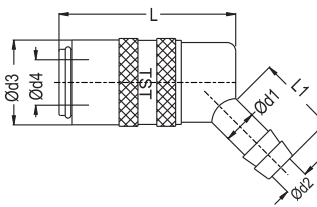
13

31

19

36.5

33.3

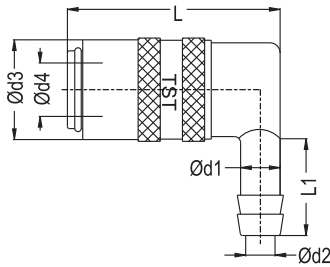


Standard hose tail socket 45°  
Kupplung mit 45°  
Standard - Schlauchtülle

**COUPLINGS, MULTICOUPLINGS & MOULD COOLING PRODUCTS**

KUPPLUNGEN, MULTIKUPPLUNGEN & KÜHLUNGSELEMENTE FÜR WERKZEUGE

**SERIE 059,060,090,190**



Standard hose tail socket 90°  
Kupplung mit 90°  
Standard - Schlauchtülle

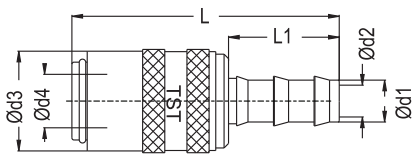


With Valve / Mit Ventil  
Order No / Bestellnr.



Without Valve / Ohne Ventil  
Order No / Bestellnr.

With Valve / Mit Ventil Order No / Bestellnr.	Without Valve / Ohne Ventil Order No / Bestellnr.	NW	d1	d2	d3	d4	L	LI
CSK 059 - 05 - 90°	SK 059 - 05 - 90°	2.7	5 - 3/16"	2.7	10	5	29.5	17
CSK 060 - 06 - 90°	SK 060 - 06 - 90°	6	6 - 1/4"	4	17.3	9	42	18.2
CSK 060 - 08 - 90°	SK 060 - 08 - 90°	6	8 - 5/16"	6	17.3	9	42	18.2
CSK 060 - 09 - 90°	SK 060 - 09 - 90°	6	9 - 5/14"	6	17.3	9	39.5	21.7
CSK 060 - 10 - 90°	SK 060 - 10 - 90°	6	10 - 3/8"	6	17.3	9	42	20.2
CSK 090 - 10 - 90°	SK 090 - 10 - 90°	9	10 - 3/8"	8	23.3	13.6	52.3	24.5
CSK 090 - 13 - 90°	SK 090 - 13 - 90°	9	13 - 1/2"	9	23.3	13.6	49.5	25
CSK 190 - 19 - 90°	SK 190 - 19 - 90°	13	19 - 3/4"	13	31	19	76.5	33.3



Push-Lock hose tail socket  
Kupplung mit gerader  
Schnellsteck - Schlauchtülle

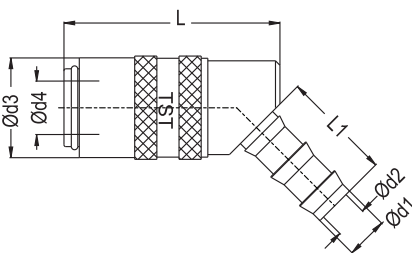


With Valve / Mit Ventil  
Order No / Bestellnr.



Without Valve / Ohne Ventil  
Order No / Bestellnr.

With Valve / Mit Ventil Order No / Bestellnr.	Without Valve / Ohne Ventil Order No / Bestellnr.	NW	d1	d2	d3	d4	L	LI
CSK 060 - FG 06	SK 060 - FG 06	6	6.7 - 1/4"	4.5	17.3	9	54.2	24
CSK 060 - FG 10	SK 060 - FG 10	6	10 - 3/8"	7.5	17.3	9	54.2	24
CSK 090 - FG 10	SK 090 - FG 10	9	10 - 3/8"	7.5	23.3	13.6	60	28
CSK 090 - FG 13	SK 090 - FG 13	9	12.7 - 3/8"	10	23.3	13.6	64	28
CSK 190 - FG 19	SK 190 - FG 19	13	19 - 3/4"	15	31	19	97	38



Push-Lock hose tail socket 45°  
Kupplung mit 45°  
Schnellsteck - Schlauchtülle



With Valve / Mit Ventil  
Order No / Bestellnr.



Without Valve / Ohne Ventil  
Order No / Bestellnr.

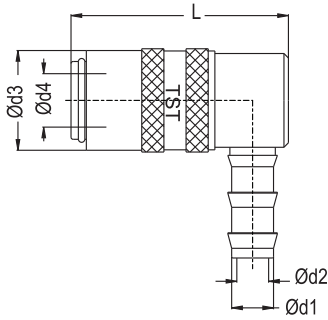
With Valve / Mit Ventil Order No / Bestellnr.	Without Valve / Ohne Ventil Order No / Bestellnr.	NW	d1	d2	d3	d4	L	LI
CSK 060 - FG 06 - 45°	SK 060 - FG 06 - 45°	6	6.7 - 1/4"	4.5	17.3	9	42	24
CSK 060 - FG 10 - 45°	SK 060 - FG 10 - 45°	6	10 - 3/8"	7	17.3	9	42	24
CSK 090 - FG 10 - 45°	SK 090 - FG 10 - 45°	9	10 - 3/8"	7.5	23.3	13.6	52.3	28
CSK 090 - FG 13 - 45°	SK 090 - FG 13 - 45°	9	12.7 - 3/8"	10	23.3	13.6	52.3	28
CSK 190 - FG 19 - 45°	SK 190 - FG 19 - 45°	13	19 - 3/4"	15	31	19	76.5	38



**COUPLINGS, MULTICOUPLINGS & MOULD COOLING PRODUCTS**

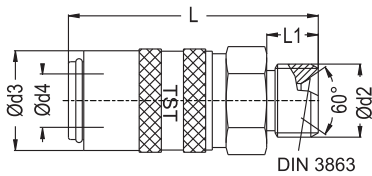
**SERIE 059,060,090,190**

**KUPPLUNGEN, MULTIKUPPLUNGEN & KÜHLUNGSELEMENTE FÜR WERKZEUGE**



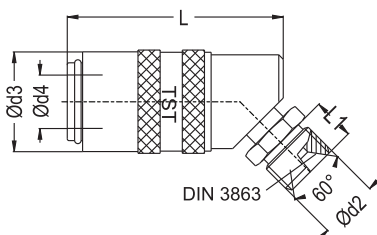
Push-Lock hose tail socket 90°  
Kupplung mit 90°  
Schnellsteck - Schlauchtülle

With Valve / Mit Ventil Order No / Bestellnr.	Without Valve / Ohne Ventil Order No / Bestellnr.	NW	d1	d2	d3	d4	L	LI
CSK 060 - FG 06 - 90°	SK 060 - FG 06 - 90°	6	6.7 - 1/4"	4.5	17.3	9	42	24
CSK 060 - FG 10 - 90°	SK 060 - FG 10 - 90°	6	10 - 3/8"	7.5	17.3	9	42	24
CSK 090 - FG 10 - 90°	SK 090 - FG 10 - 90°	9	10 - 3/8"	7.5	23.3	13.6	52.3	28
CSK 090 - FG 13 - 90°	SK 090 - FG 13 - 90°	9	12.7 - 1/2"	10	23.3	13.6	52.3	28
CSK 190 - FG 19 - 90°	SK 190 - FG 19 - 90°	13	19 - 3/4"	15	11	19	76.5	38



Cylindrical Male Thread socket  
Kupplung mit Aussengewinde zylindrisch

With Valve / Mit Ventil Order No / Bestellnr.	Without Valve / Ohne Ventil Order No / Bestellnr.	NW	d2	d3	d4	L	LI	SW
CSK 060 - EGM 10	SK 060 - EGM 10	6	M10x1.0	17	9	48	11	17
CSK 060 - EG 13	SK 060 - EG 13	6	BSP 1/4"	17.3	9	47	11	17
CSK 060 - EGM 14	SK 060 - EGM 14	6	M14x1.5	17.3	9	47	11	17
CSK 060 - EG 17	SK 060 - EG 17	6	BSP 3/8"	17.3	9	47	11	17
CSK 090 - EGM 16	SK 090 - EGM 16	9	M16x1.5	23.3	13	51.3	11	21
CSK 090 - EG 17	SK 090 - EG 17	9	BSP 3/8"	23.3	13.6	51.3	11	21
CSK 090 - EG 21	SK 090 - EG 21	9	BSP 1/2"	23.3	13.6	51.3	14	21
CSK 190 - EG 21	SK 190 - EG 21	13	BSP 1/2"	31	19.6	75	14	30
CSK 190 - EGM 24	SK 190 - EGM 24	13	M24x1.5	31	19	77	16	30



Cylindrical Male Thread socket 45°  
Kupplung mit 45° Aussengewinde zylindrisch

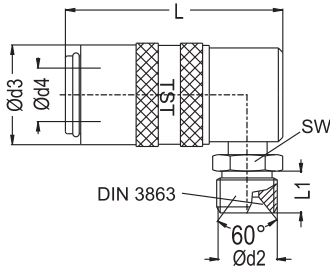
With Valve / Mit Ventil Order No / Bestellnr.	Without Valve / Ohne Ventil Order No / Bestellnr.	NW	d2	d3	d4	L	LI	SW
CSK 060 - EG 13 - 45°	SK 060 - EG 13 - 45°	6	BSP 1/4"	17.3	9	42	11	14
CSK 060 - EGM 14 - 45°	SK 060 - EGM 14 - 45°	6	M14x1.5	17.3	9	42	11	17
CSK 060 - EG 17 - 45°	SK 060 - EG 17 - 45°	6	BSP 3/8"	17.3	9	42	11	17
CSK 090 - EG 17 - 45°	SK 090 - EG 17 - 45°	9	BSP 3/8"	23.3	13.6	52.3	11	17
CSK 090 - EGM 16 - 45°	SK 090 - EGM 16 - 45°	9	M16x1.5	23.3	13.6	52.3	11	17
CSK 090 - EG 21 - 45°	SK 090 - EG 21 - 45°	9	BSP 1/2"	23.3	13.6	52.3	11	21
CSK 190 - EG 21 - 45°	SK 190 - EG 21 - 45°	13	BSP 1/2"	31	19	76.5	16	22
CSK 190 - EGM 24 - 45°	SK 190 - EGM 24 - 45°	13	M24x1.5	31	19	76.5	16	14



COUPLINGS, MULTICOUPLINGS & MOULD COOLING PRODUCTS

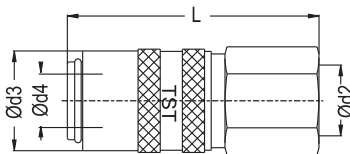
KUPPLUNGEN, MULTIKUPPLUNGEN & KÜHLUNGSELEMENTE FÜR WERKZEUGE

SERIE 059,060,090,190



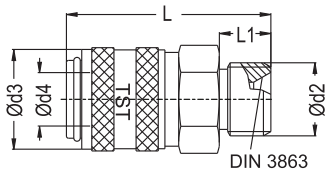
Cylindrical Male Thread socket 90°  
Kupplung mit 90° Aussengewinde zylindrisch

With Valve / Mit Ventil Order No / Bestellnr.	Without Valve / Ohne Ventil Order No / Bestellnr.	NW	d2	d3	d4	L	LI	SW
CSK 060 - EG 13 - 90°	SK 060 - EG 13 - 90°	6	BSP 1/4"	17.3	9	42	11	14
CSK 060 - EGM 14 - 90°	SK 060 - EGM 14 - 90°	6	M14x1.5	17.3	9	42	11	17
CSK 060 - EG 17 - 90°	SK 060 - EG 17 - 90°	6	BSP 3/8"	17.3	9	42	11	17
CSK 090 - EG 17 - 90°	SK 090 - EG 17 - 90°	9	BSP 3/8"	23.3	13.6	52.3	11	17
CSK 090 - EGM 16 - 90°	SK 090 - EGM 16 - 90°	9	M16x1.5	23.3	13.6	52.3	11	17
CSK 090 - EG 21 - 90°	SK 090 - EG 21 - 90°	9	BSP 1/2"	23.3	13.6	52.3	11	21
CSK 190 - EG 21 - 90°	SK 190 - EG 21 - 90°	13	BSP 1/2"	31	19	76.5	16	22
CSK 190 - EGM 24 - 90°	SK 190 - EGM 24 - 90°	13	M24x1.5	31	19	76.5	16	24



Female Thread socket  
Kupplung mit Innengewinde

With Valve / Mit Ventil Order No / Bestellnr.	Without Valve / Ohne Ventil Order No / Bestellnr.	NW	d2	d3	d4	L	LI	SW
CSK 060 - DGM 10	SK 060 - DGM 10	6	M10x1.0	17	9	44	9	17
CSK 060 - DG 13	SK 060 - DG 13	6	BSP 1/4"	17.3	9	47	11	17
CSK 060 - DGM 14	SK 060 - DGM 14	6	M14x1.5	17.3	9	47	11	17
CSK 060 - DG 17	SK 060 - DG 17	6	BSP 3/8"	17.3	9	47	11	17
CSK 090 - DGM 16	SK 090 - DGM 16	9	M16x1.5	23.3	13.6	48	9	21
CSK 090 - DG 17	SK 090 - DG 17	9	BSP 3/8"	23.3	13.6	48	9	21
CSK 090 - DG 21	SK 090 - DG 21	9	BSP 1/2"	23.3	13.6	50.3	12	24
CSK 190 - DG 21	SK 190 - DG 21	13	BSP 1/2"	31	19	77	14	30
CSK 190 - DGM 24	SK 190 - DGM 24	13	M24x1.5	31	19	77	16	30
CSK 190 - DG 26	SK 190 - DG 26	13	BSP 3/4"	31	19	77	18	30



Cylindrical Male Thread socket (Short type)  
Kupplung mit Aussengewinde zylindrisch  
(kurze Version)

With Valve / Mit Ventil Order No / Bestellnr.	NW	d2	d3	d4	L	LI	SW
060 - EG 13	6	BSP 1/4"	18.3	9	39	9	17
090 - EG 17	9	BSP 3/8"	23	13.6	38	9	21



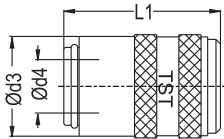
COUPLINGS, MULTICOUPLINGS & MOULD COOLING PRODUCTS

SERIE 059,060,090,190

KUPPLUNGEN, MULTIKUPPLUNGEN & KÜHLUNGSELEMENTE FÜR WERKZEUGE

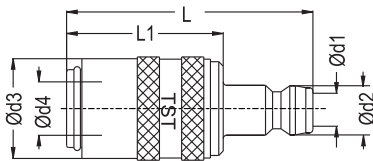


Blind Socket / Blindkupplung



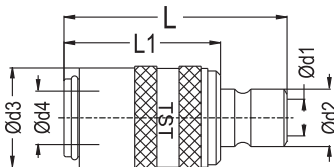
Order No / Bestellnr.	NW	d3	d4	LI
060 KTG 00	6	17.3	9	34
090 KTG 00	9	23	13,6	39.5

Adapting Socket with 060 - 090 Plugs  
Adapterkupplung mit Nippel



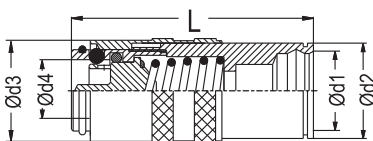
With Valve / Mit Ventil Order No / Bestellnr.	Without Valve / Ohne Ventil Order No / Bestellnr.	NW	d1	d2	d3	d4	L	LI
CSK 060 AU 090	SK 060 AU 090	6	9	13.5	18.2	9	46	32
CSK 090 AU 060	SK 090 AU 060	9	6	9	23.3	13.6	50.3	36.1

Adapting Socket With 6 - 9 Plugs  
Adapterkupplung mit Nippel



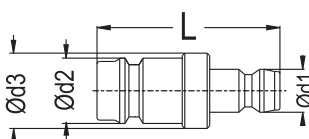
With Valve / Mit Ventil Order No / Bestellnr.	Without Valve / Ohne Ventil Order No / Bestellnr.	NW	d1	d2	d3	d4	L	LI
CSK 060 AU 06	SK 060 AU 06	6	6	9.4	18	9	46	32
CSK 090 AU 09	SK 090 AU 09	9	9	13.5	23.3	13.6	50.3	36.2

Adapting Socket with 100.08 Plug  
Adapterkupplung mit Buchse



With Valve / Mit Ventil Order No / Bestellnr.	Without Valve / Ohne Ventil Order No / Bestellnr.	NW	d1	d2	d3	d4	L
CSK 060 AU 100.08	SK 060 AU 100.08	6	17	21	18	9	51
CSK 090 AU 100.08	SK 090 AU 100.08	9	17	21	23	13.6	58.3

Adapting Plug 060 - 090  
Adaptornippel 060 - 090



Order No / Bestellnr.	d1	d3	d2	L
060 HEF 090	9	13	13.45	38
060 HEF 060	9	9	11	34
090 HEF 00	13.45	13	13.45	40

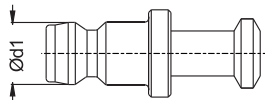
COUPLINGS, MULTICOUPLINGS & MOULD COOLING PRODUCTS

KUPPLUNGEN, MULTIKUPPLUNGEN & KÜHLUNGSELEMENTE FÜR WERKZEUGE

SERIE 059,060,090,190



Stop Plug / Blindnippel



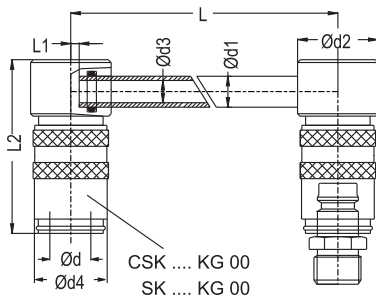
Order No / Bestellnr.

dI

059 KTU 00  
060 KTU 00  
090 KTU 00  
190 KTU 00

5  
9  
13  
19

Diverting Socket / Umlenk Kupplungen



With Valve / Mit Ventil  
Order No / Bestellnr.

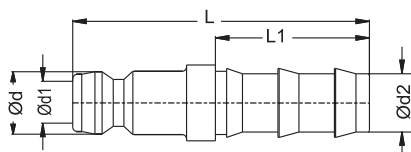
Without Valve / Ohne Ventil  
Order No / Bestellnr.

CSK 060 - KG 125  
CSK 060 - KG 250  
CSK 060 - KG 500  
CSK 090 - KG 125  
CSK 090 - KG 250  
CSK 090 - KG 500  
CSK 190 - KG 160  
CSK 190 - KG 315  
CSK 190 - KG 500

SK 060 - KG 125  
SK 060 - KG 250  
SK 060 - KG 500  
SK 090 - KG 125  
SK 090 - KG 250  
SK 090 - KG 500  
SK 190 - KG 160  
SK 190 - KG 315  
SK 190 - KG 500

d	dI	d2	d3	d4	t	h	L	LI	L2
9	8	20	6	17.3	18	29	125	0	44
9	8	20	6	17.3	18	29	250	0	44
9	8	20	6	17.3	18	29	500	0	44
13.5	10	26	8	23	18	39	125	2	53
13.5	10	26	8	23	18	39	250	2	53
13.5	10	26	8	23	18	39	500	2	53
19	14	36	12	31	36	54	160	3	80
19	14	36	12	31	36	54	315	3	80
19	14	36	12	31	36	54	500	3	80

Push-Lock Hose Plug  
Stecknippel mit  
Schnellsteck - Schlauchtülle



Order No / Bestellnr.

NW

d

dI

d2

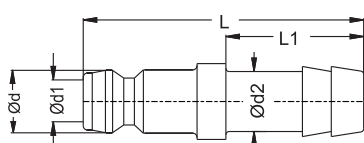
LI

L

060 FU 10  
060 FU 13  
090 FU 10  
090 FU 13  
190 FU 13  
190 FU 19

6 9 6 10 - 3/8" 24 44  
6 9 6 12.7 - 1/2" 28 45  
9 13.5 9 10 - 3/8" 24 43  
9 13.5 9 12.7 - 1/2" 28 47  
13 19 13 13 - 1/2" 28 60  
13 19 13 19 - 3/4" 38 70

Standard Hose Plug  
Standard Schlauchtülle



Order No / Bestellnr.

NW

d

dI

d2

LI

L

059 HU 05  
060 HU 06  
060 HU 08  
060 HU 09  
060 HU 10  
060 HU 13  
090 HU 10  
090 HU 13  
190 HU 13  
190 HU 19

5 5 2.5 5 13 26  
6 9 6 6 - 1/4" 17.3 37  
6 9 6 8 - 5/16" 17.3 37  
6 9 6 9 - 5/14" 17.3 37  
6 9 6 10 - 3/8" 17.3 37  
6 9 6 13 - 1/2" 23.3 43  
9 13.5 9 10 - 3/8" 23.3 39  
9 13.5 9 13 - 1/2" 23.3 40  
13 19 13 13 - 1/2" 23.3 53  
13 19 13 19 - 3/4" 32 60





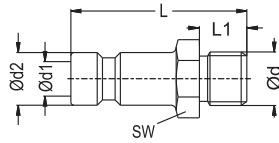
COUPLINGS, MULTICOUPLINGS & MOULD COOLING PRODUCTS

SERIE 059,060,090,190

KUPPLUNGEN, MULTIKUPPLUNGEN & KÜHLUNGSELEMENTE FÜR WERKZEUGE

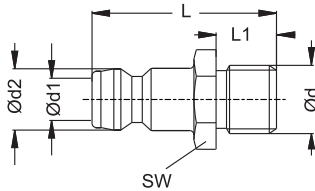


Plug with male thread ( 059 serie )  
Nippel mit Aussengewinde ( 059 serie )



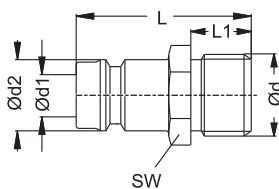
Order No / Bestellnr.	Ød	dI	d2	SW	L	LI
059 EUM 5	M5x0.50	2.5	5	7	5	18
059 EUM 8	M8x0.75	2.5	5	11	8	21

Plug with male thread ( 060 serie )  
Nippel mit Aussengewinde ( 060 serie )



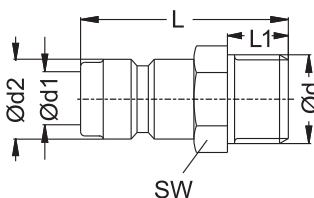
Order No / Bestellnr.	Ød	dI	d2	SW	L	LI
060 EUM 8	M8x0.75	4.5	9	11	7	24
060 EUM 10	M10x1.0	6	9	11	7	24
060 EUM 10-1.5	M10x1.5	6	9	11	8	25
060 EU 10	BSP 1/8"	6	9	11	7	24
060 EU 13	BSP 1/4"	6	9	14	9	26
060 EUM 14	M14x1.5	6	9	14 <sup>14</sup>	9	26
060 EU 17	BSP 3/8"	6	9	17 <sup>14</sup>	9	26

Plug with male thread ( 090 serie )  
Nippel mit Aussengewinde ( 090 serie )



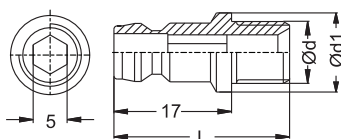
Order No / Bestellnr.	Ød	dI	d2	SW <sup>14</sup> <sub>14</sub>	L	LI
090 EU 10	BSP 1/8"	9	13.5	15	7	26
090 EUM 10	M10x1.0	9	13.5	17	7	26
090 EUM 10x1.5	M10x1.5	9	13.5	17	9	28
090 EUM 12	M12x1.5	9	13.5	21	9	30
090 EU 13	BSP 1/4"	9	13.5		9	28
090 EUM 14	M14x1.5	9	13.5		9	29
090 EUM 16	M16x1.5	9	13.5		9	29
090 EU 17	BSP 3/8"	9	13.5		9	28
090 EU 21	BSP 1/2"	9	13.5		12	31

Plug with male thread  
Nippel mit Aussengewinde



Order No / Bestellnr.	Ød	dI	d2	SW	L	LI
190 EU 21	BSP 1/2"	13	19	22	12	47
190 EUM 24	M24x1.5	13	19	27	16	51
190 EU 26	BSP 3/4"	13	19	27	16	51

Inner hex. Plugs for 060 Serie  
Nippel mit Innensechskant



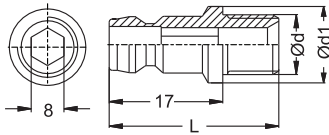
Order No / Bestellnr.	Ød	dI	L
060 AUM 08	M8x0.75	10	24
060 AUM 10	M10x1.0	13	24
060 AUG 10	BSP 1/8"	13	24
060 AUG 13	BSP 1/4"	13.5	27

COUPLINGS, MULTICOUPLINGS & MOULD COOLING PRODUCTS

KUPPLUNGEN, MULTIKUPPLUNGEN & KÜHLUNGSELEMENTE FÜR WERKZEUGE **SERIE 059,060,090,190**

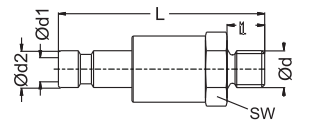


Inner hex. Plugs for 090 Serie  
Nippel mit Innensechskant



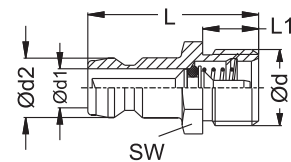
Order No / Bestellnr.	Ød	dI	L
090 AUM 14	M14x1.5	14.5	26
090 AUG 13	BSP 1/4"	13.5	26
090 AUG 17	BSP 3/8"	17	26

Plug with valve (059 serie)  
Verschlussnippel ( 059 serie )



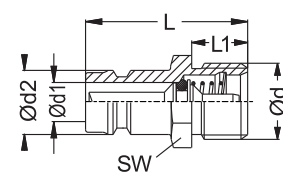
Order No / Bestellnr.	Ød	dI	d2	L	LI	SW
059 EUBM 5	M5x0.50	2.7	5	28	5	9
059 EUBM 8	M8x0.75	2.7	5	30	7	9

Plug with valve (060 serie)  
Verschlussnippel ( 060 serie )



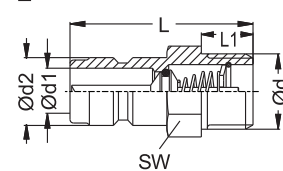
Order No / Bestellnr.	Ød	dI	d2	L	LI	SW
060 EUB 13	BSP 1/4"	6	9	28	11	14
060 EUBM 14	M14x1.5	6	9	28	11	14
060 EUB 17	BSP 3/8"	6	9	28	11	17

Plug with valve ( 090 serie )  
Verschlussnippel ( 090 serie )



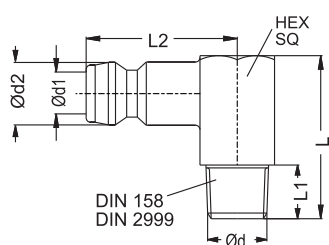
Order No / Bestellnr.	Ød	dI	d2	L	LI	SW
090 EUB 13	BSP 1/4"	9	13.5	30	12	14
090 EUBM 14	M14x1.5	9	13.5	30	12	15
090 EUBM 16	M16x1.5	9	13.5	30	12	17
090 EUB 17	BSP 3/8"	9	13.5	30	12	17

Plug with valve ( 190 serie )  
Verschlussnippel ( 190 serie )



Order No / Bestellnr.	Ød	dI	d2	L	LI	SW
190 EUB 21	BSP 1/2"	13	19	51	14.4	22
190 EUBM 24	M24x1.5	13	19	51	14.4	27
190 EUB 26	BSP 3/4"	13	19	51	14.4	27

Angle Plug with 90°  
WinkelNippel mit 90°



Order No / Bestellnr.	Ød	dI	d2	SW (SQ)	L	LI	L2
059 EUM 5 - 90°	M5x0.50	6	5	10	15.5	5	14.5
059 EUM 8 - 90°	M8x0.75	6	5	10	17.5	7	14.5
060 EUM 8 - 90°	M8x0.75	6	9	11	27	9	23
060 EUM 10 - 90°	M10x1.0	6	9	11	27	9	23
060 RU 10 - 90°	BSPT 1/8"	6	9	11	27	9	23
060 RU 13 - 90°	BSPT 1/4"	6	9	15	34	12	27.5
060 EUM 14 - 90°	M14x1.5	6	9	15	34	12	27.5
060 RU 17 - 90°	BSPT 3/8"	6	9	17	34	12	23
090 RU 13 - 90°	BSPT 1/4"	9	13.5	15	34	11	24.5
090 EUM 14 - 90°	M14x1.5	9	13.5	15	34	12	25.5
090 RU 17 - 90°	BSPT 3/8"	9	13.5	17	34	12	27
190 RU 21 - 90°	BSPT 1/2"	13	19	25	47	15	42
190 EUM 24 - 90°	M24x1.5	13	19	24	47	16	42



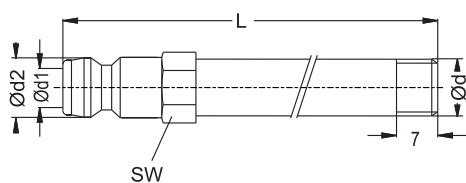
COUPLINGS, MULTICOUPLINGS & MOULD COOLING PRODUCTS

SERIE 059,060,090,190

KUPPLUNGEN, MULTIKUPPLUNGEN & KÜHLUNGSELEMENTE FÜR WERKZEUGE

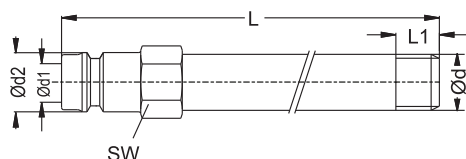


Extension plug with thread ( 060 serie )  
Verlängerungsniessel mit Gewinde ( 060 serie )



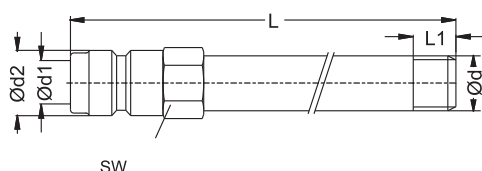
Order No / Bestellnr.	Ød	d1	d2	11 SW 11	LI	Extension tube / Verlängerung		
						L60	L100	L150
060 EUM 8 x L	M8x0.75	5	9	11	7	60	100	150
060 EUM 10 x L	M10x1.0	6	9	11	7	60	100	150
060 EUM 10x1.5 x L	M10x1.5	6	9	14	9	60	100	150
060 EU 10 x L	BSP 1/8"	6	9	15	7	60	100	150
060 EU 13 x L	BSP 1/4"	6	9	17	9	60	100	150
060 EUM 14 x L	M14x1.5	6	9		10	60	100	150
060 EU 17 x L	BSP 3/8"	6	9		9	60	100	150

Extension plug with thread ( 090 serie )  
Verlängerungsniessel mit Gewinde ( 090 serie )



Order No / Bestellnr.	Ød	d1	d2	SW	LI	Extension tube / Verlängerung		
						L60	L100	L150
090 EU 10 x L	BSP 1/8"	9	13.5	14	7	60	100	150
090 EUM 10 x L	M10x1.0	9	13.5	14	8	60	100	150
090 EUM 10x1.5 x L	M10x1.5	9	13.5	14	10	60	100	150
090 EUM 12 x L	M12x1.5	9	13.5	14	10	60	100	150
090 EU 13 x L	BSP 1/4"	9	13.5	14	9	60	100	150
090 EUM 14 x L	M14x1.5	9	13.5	15	10	60	100	150
090 EUM 16 x L	M16x1.5	9	13.5	17	13	60	100	150
090 EU 17 x L	BSP 3/8"	9	13.5	17	9	60	100	150
090 EU 21 x L	BSP 1/2"	9	13.5	21	12	60	100	150

Extension plug with thread ( 190 serie )  
Verlängerungsniessel mit Gewinde ( 190 serie )



Order No / Bestellnr.	Ød	d1	d2	SW	LI	Extension tube / Verlängerung		
						L60	L100	L150
190 EU 21 x L	BSP 1/2"	13	19	22	12	250	500	800
190 EUM 24 x L	M24x1.5	13	19	27	15	250	500	800
190 EU 26 x L	BSP 3/4"	13	19	27	16	250	500	800

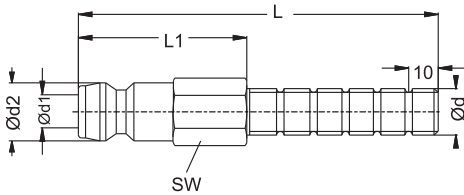
COUPLINGS, MULTICOUPLINGS & MOULD COOLING PRODUCTS

KUPPLUNGEN, MULTIKUPPLUNGEN & KÜHLUNGSELEMENTE FÜR WERKZEUGE

SERIE 059,060,090,190

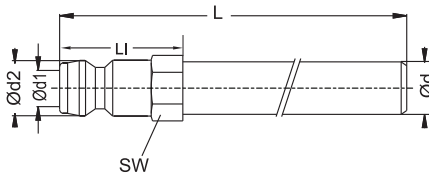


Long threaded plugs ( 060 - 090 serie )  
Gewindestecker ( 060 - 090 serie )



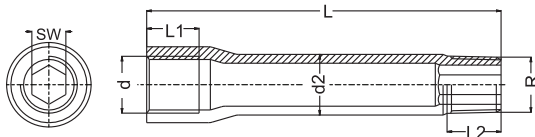
Order No / Bestellnr.	Type	Ød	d1	d2	SW	LI	L2
060 BLM 10x100	060	M10x1.0	6	9	11	40	100
060 BL 10x100	060	BSP 1/8"	6	9	11	40	100
060 BL 13x100	060	BSP 1/4"	6	9	14	40	100
060 BLM 14x100	060	M14x1.5	6	9	14	40	100
060 BL 17x100	060	BSP 3/8"	6	9	17	40	100
090 BLM 10x100	090	M10x1.0	9	13.5	14	40	100
090 BL 10x100	090	BSP 1/8"	9	13.5	14	40	100
090 BL 13x100	090	BSP 1/4"	9	13.5	14	40	100
090 BLM 14x100	090	M14x1.5	9	13.5	14	40	100
090 BLM 16x100	090	M16x1.5	9	13.5	17	40	100
090 BL 17x100	090	BSP 3/8"	9	13.5	17	40	100

Extension Plug without thread  
Verlängerungsnippel ohne Gewinde



Order No / Bestellnr.	Type	Ød	d1	d2	SW	LI	L2
060 BU 63	060	8	6	9	9	21	63
060 BU 100	060	10	6	9	11	21	100
060 BU 120	060	10	6	9	11	21	120
060 BU 240	060	10	6	9	11	21	240
060 BU 360	060	10	6	9	11	21	360
090 BU 150	090	14	9	13.5	15	22	150
090 BU 300	090	14	9	13.5	15	22	300
090 BU 450	090	14	9	13.5	15	22	450
190 BU 500	190	21	13	19	22	35	500
190 BU 800	190	21	13	19	22	35	800

Steel Extension Tube  
Verlängerungsnippel aus Stahl



Order No / Bestellnr.		d	R	d2	L	LI	L2	SW
BSP / BSPT	NPT / NPT							
R 10 BU 50	N 10 BU 50	1/8"	1/8"	10	50	12	10	5
R 10 BU 75	N 10 BU 75	1/8"	1/8"	10	75	12	10	5
R 10 BU 100	N 10 BU 100	1/8"	1/8"	10	100	12	10	5
R 10 BU 125	N 10 BU 125	1/8"	1/8"	10	125	12	10	5
R 13 BU 50	N 13 BU 50	1/4"	1/4"	14	50	12	11	8
R 13 BU 75	N 13 BU 75	1/4"	1/4"	14	75	12	11	8
R 13 BU 100	N 13 BU 100	1/4"	1/4"	14	100	12	11	8
R 13 BU 125	N 13 BU 125	1/4"	1/4"	14	125	12	11	8
R 13 BU 150	N 13 BU 150	1/4"	1/4"	14	150	12	11	8

Spare O-Rings / Ersatz O-Ring ( NBR )



Order No / Bestellnr.	Serie	Temperature
CG 060 N	TST 060	
CG 090 N	TST 090	-20° / 100° C
CG 190 N	TST 190	-4° F / +212° F

Spare O-Rings / Ersatz O-Ring ( V )



Order No / Bestellnr.	Serie	Temperature
CG 060 V	TST 060	
CG 090 V	TST 090	-20° / 200° C
CG 190 V	TST 190	-14° F / +392° F



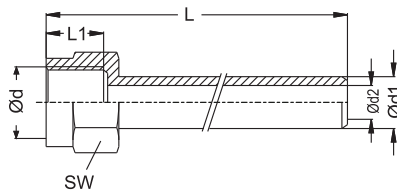
COUPLINGS, MULTICOUPLINGS & MOULD COOLING PRODUCTS

SERIE 059,060,090,190

KUPPLUNGEN, MULTIKUPPLUNGEN & KÜHLUNGSELEMENTE FÜR WERKZEUGE

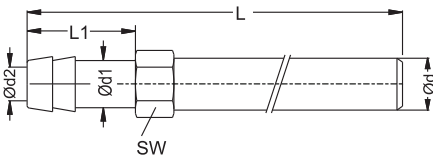


Sealing plug extension / Dichtungsnippel mit Verlängerung



Order No / Bestellnr.	Ød	d1	d2	LI	t	SW	L
UN M 14 - 120	M14x1.5	10	6	12	15.5	17	120
UN M 14 - 240	M14x1.5	10	6	12	15.5	17	240
UN M 16 - 150	M16x1.5	14	9	12	15.5	22	150
UN M 16 - 300	M16x1.5	14	9	12	15.5	22	300
UN M 24 - 500	M24x1.5	21	13	16	21	30	500
UN M 24 - 800	M24x1.5	21	13	16	21	30	800

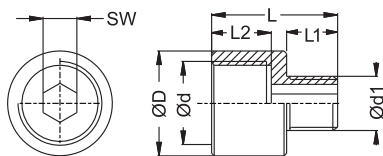
Hose tail extension Schlauchtülle Verlängerung



Material : Brass - Messing

Order No / Bestellnr.	Ød	d2	d1	LI	SW	L
BHE 120	10	6	9		11	120
BHE 240	10	6	9		11	240
BHE 360	10	6	9		11	360
BHE 150	14	9	13.3		15	150
BHE 300	14	9	13.3		15	300
BHE 450	14	9	13.3		15	450
BHE 500	21	13	19.3		22	500

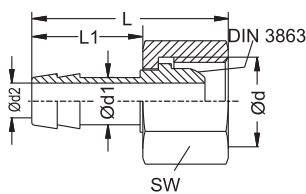
Cylindrical reduction Reduziernippel



Material : Brass - Messing

Order No / Bestellnr.	Ød	Ød1	ØD	L	LI	L2	SW
BDM 14/10	M14x1.5	M10x1	17	22	6	12	6
BDM 13/10	BSP 1/4"	BSP 1/8"	17	22	6	12	6
BDM 16/14	M16x1.5	M14x1.5	20	24	9	12	8
BDM 17/13	BSP 3/8"	BSP 1/4"	20	24	9	12	8

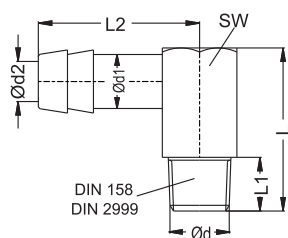
Hose tail + Nut Schlauchtüllen + Überwurfmutter



Material : Brass - Messing

Order No / Bestellnr.	Ød	d1	d2	LI	L	SW
SN 14	M14x1.5	9	6	17.3	31.3	17
SN 13	BSP 1/4"	9	6	17.3	31.3	17
SN 16	M16x1.5	13	9	23	37	19
SN 17	BSP 3/8"	13	9	23	37	19
SN 24	M24x1.5	19	15	33	47	30
SN 26	BSP 3/4"	19	13	31	55	30

Angle Nippel ( 90° ) Winkelnippel ( 90° )



Material : Brass - Messing

Order No / Bestellnr.	Ød	d1	d2	L	LI	L2	SW
AHE M8	M8x0.75	9	6	27	9	23.4	11
AHE M10	M10x1	9	6	27	9	23.4	11
AHE 10	BSPT 1/8"	9	6	27	9	23.4	11
AHE M14	M14x1.5	13	9	34	12	33	15
AHE 13	BSPT 1/4"	13	9	34	12	33	15
AHE M24	M24x1.4	19	13	47	16	41.5	24
AHE 21	BSPT 1/2"	19	13	47	16	54	30

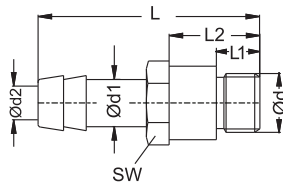
COUPLINGS, MULTICOUPLINGS & MOULD COOLING PRODUCTS

KUPPLUNGEN, MULTIKUPPLUNGEN & KÜHLUNGSELEMENTE FÜR WERKZEUGE

SERIE 059,060,090,190



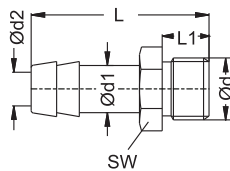
Hose nipple / Nippel mit Schlauchtülle



Material : MS 58 (Brass - Messing)

Order No / Bestellnr.	d	d1	d2	L	LI	L2	SW
UHE M10	M10x1.0	9	6	40.5	7	14	
UHE 10	BSP 1/8"	9	6	40.5	7	14	
UHE M12	M12x1.5	13	8	47	9	16	
UHE M14	M14x1.5	13	9	47	9	20	
UHE 13	BSP 1/4"	13	9	47	9	20	
UHE M24	M24x1.5	19	13	62	12	22	
UHE 21	BSP 1/2"	19.5	13	62	12	22	

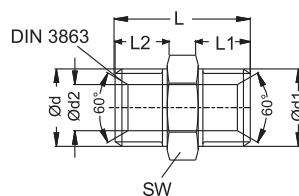
SHE nippel / SHE Nippel



Material : MS 58 (Brass - Messing)

Order No / Bestellnr.	d	d1	d2	L	LI	SW
SHE M8	M8x0,75	9	6	27	6	11
SHE M10	M10x1.0	9	6	28	6	11
SHE 10	BSP 1/8"	9	6	28	7	11
SHE M12	M12x1.5	13	9	38	9	15
SHE 13	BSP 1/4"	13	9	38	10	15
SHE M14	M14x1.5	13	9	38	10	15
SHE M16	M16x1.5	13	9	38	10	17
SHE 17	BSP 3/8"	13	9	38	10	17
SHE M24	M24x1.5	19	13	49	16	27
SHE 21	BSP 1/2"	19	13	46	12	22
SHE 26	BSP 3/4"	19	13	49	16	27

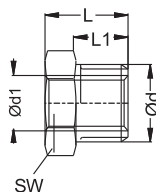
Double nipples / Doppelnippel



Material : MS 58 (Brass - Messing)

Order No / Bestellnr.	d	d1	d2	L	LI	L2	SW
DP 14/14	M14x1,5	M14x1,5	6	23	9	9	17
DP 14/13	M14x1.5	BSP 1/4"	6	23	9	9	17
DP 13/13	BSP 1/4"	BSP 1/4"	6	23	9	9	17
DP 16/16	M16x1.5	M16x1.5	9	23	9	9	17
DP 16/17	M16x1.5	BSP 3/8"	9	23	9	9	19
DP 17/17	BSP 3/8"	BSP 3/8"	9	23	9	9	19
DP 24/24	M24x1.5	M24x1.5	13	40	16	16	27
DP 24/21	M24x1.5	BSP 1/2"	13	36	16	12	27
DP 21/21	BSP 1/2"	BSP 1/2"	13	30	12	12	22
DP 26/26	BSP 3/4"	BSP 3/4"	13	40	16	16	27

Reduction / Reduzierung



Material : MS 58 (Brass - Messing)

Order No / Bestellnr.	d	d1	L	LI	SW
RD 14/10-1	M14x1,5	M10x1.0	14	9	15
RD 18/14	M18x1.5	M14x1.5	14	9	19
RD 13/10	BSP 1/4"	BSP 1/8"	14	9	14
RD 17/13	BSP 3/8"	BSP 1/4"	13	9	19
RD 21/17	BSP 1/2"	BSP 3/8"	18	12	22
RD 24/16	M24x1.5	M16x1.5	24	16	25
RD 26/21	BSP 3/4"	BSP 1/2"	24	16	27