

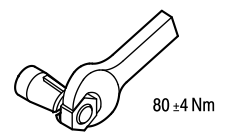
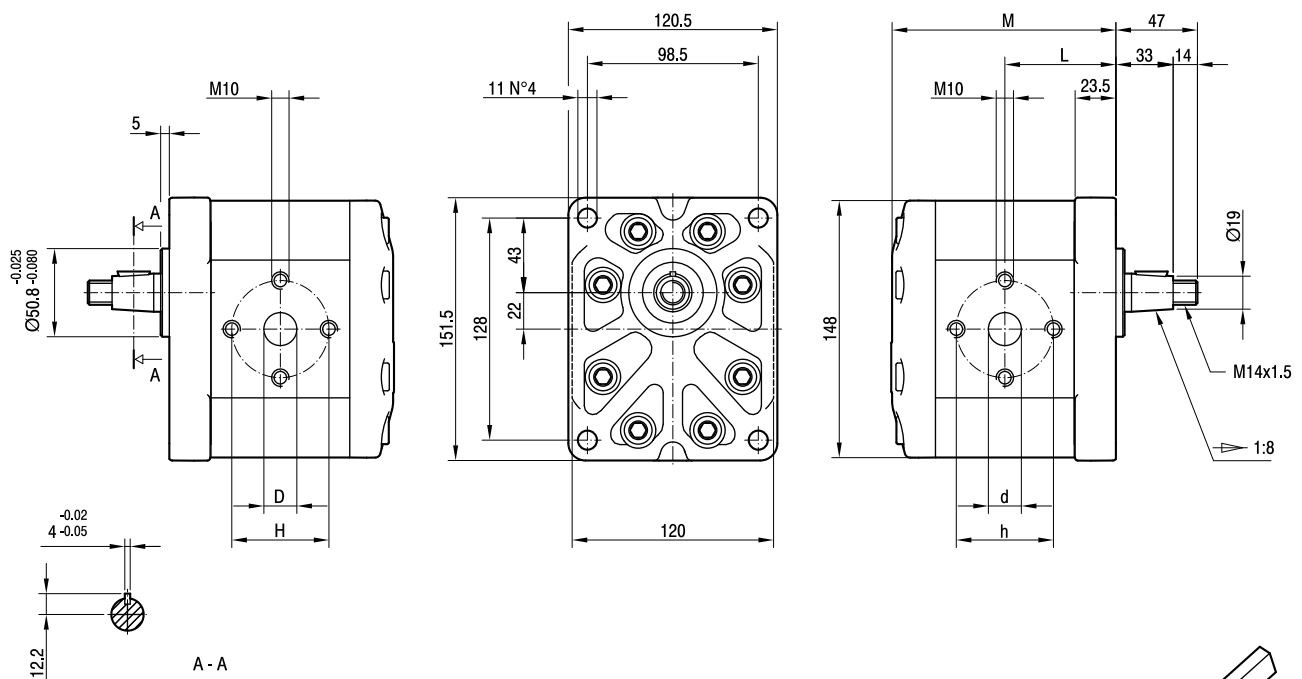
ALP3

Parti accessorie a corredo della pompa standard: linguetta a disco (codice 522058), dado M14x1.5 (codice 523017), rosetta elastica spaccata (codice 523006).
 Porte standard: filetti M10 profondità utile 19 mm.

Accessories supplied with the standard pump: woodruff key (code 522058), M14x1.5 hexagonal nut (code 523017), washer (code 523006).
 Standard ports: M10 threads depth 19 mm.

MANDATA
OUTLET

ASPIRAZIONE
INLET



TIPO TYPE	CILINDRATA DISPLACEMENT	PORTATA a 1500 giri/min FLOW at 1500 rev/min	PRESSIONI MASSIME MAX PRESSURE			VELOCITÀ MASSIMA MAX SPEED	DIMENSIONI DIMENSIONS					
			P ₁	P ₂	P ₃		L	M	d	D	h	H
	cm ³ /giro [cm ³ /rev]	litri/min [litres/min]	bar	bar	bar	giri/min [rpm]	mm	mm	mm	mm	mm	mm
ALP3-D-30	20	29	230	250	270	3500	64	129,5	27	19	56	56
ALP3-D-33	22	31	230	250	270	3500	64,5	130,5	27	19	56	56
ALP3-D-40	26	37	230	250	270	3000	66	133,5	27	19	56	56
ALP3-D-50	33	48	230	250	270	3000	68,5	138,5	27	19	56	56
ALP3-D-60	39	56	220	240	260	3000	70,5	142,5	27	19	56	56
ALP3-D-66	44	62	210	230	250	2800	72	145,5	27	27	51	51
ALP3-D-80	52	74	200	215	230	2400	75	151,5	27	27	56	56
ALP3-D-94	61	87	190	205	220	2800	78	157,5	33	27	62	51
ALP3-D-110	71	101	170	185	200	2500	81,5	164,5	33	27	62	51
ALP3-D-120	78	112	160	175	190	2300	84	169,5	33	27	62	51
ALP3-D-135	87	124	140	155	170	2000	87	175,5	33	27	62	51

ALP3A

Parti accessorie a corredo della pompa standard: linguetta (codice 522068).

Monta flangia 101-2 (B) secondo norma SAE J744c.

Filetto 1/4-28 UNF profondità utile 20 mm.

* Porte standard: filetti 3/8-16 UNC

profondità utile 19 mm, filetti

7/16-14 UNC profondità utile 19 mm.

Accessories supplied with the standard pump: key (code 522068).

Mounting flange 101-2 (B) in compliance with SAE J744c.

1/4-28 UNF thread depth 20 mm.

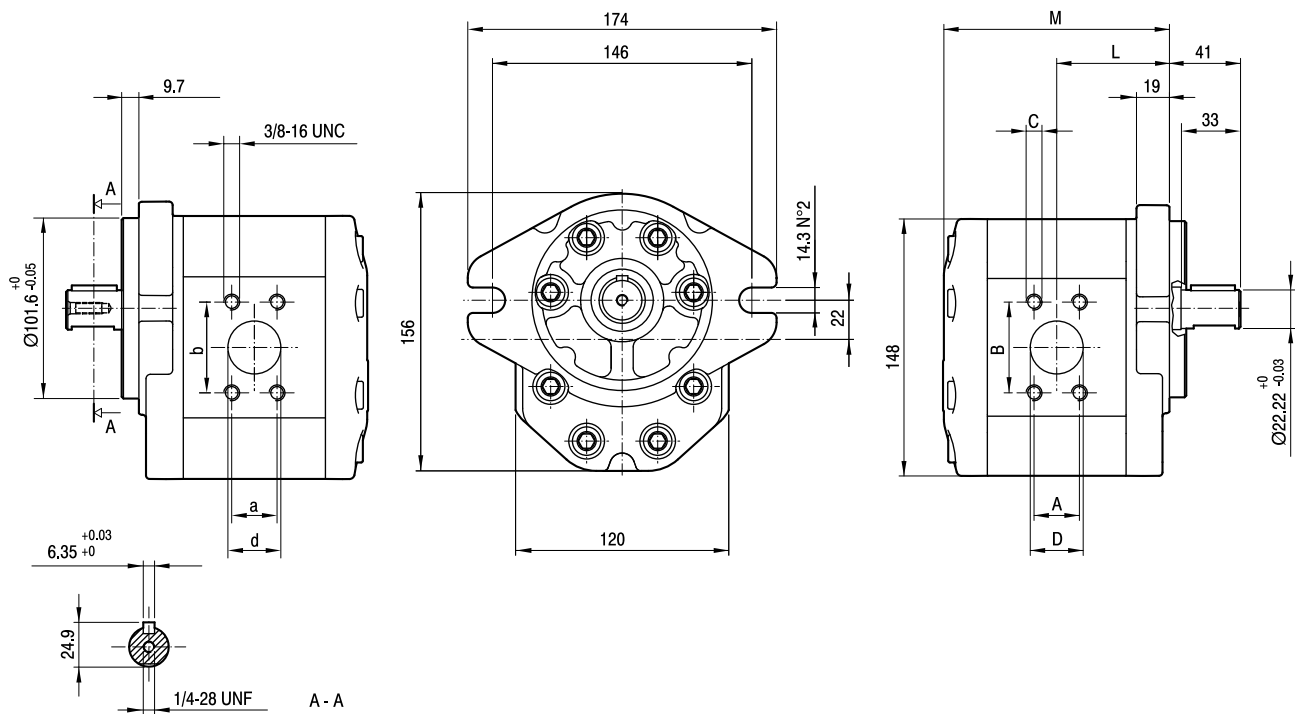
* Standard ports:

3/8-16 UNC threads depth 19 mm,

7/16-14 UNC threads depth 19 mm.

MANDATA
OUTLET

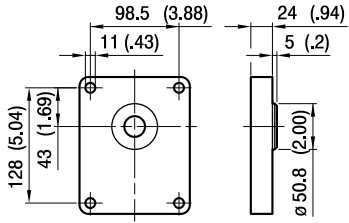
ASPIRAZIONE
INLET



TIPO TYPE	CILINDRATA DISPLACEMENT	PORTATA a 1500 giri/min FLOW at 1500 rev/min	PRESSIONI MASSIME MAX PRESSURE			VELOCITÀ MASSIMA MAX SPEED	DIMENSIONI DIMENSIONS								
			P ₁	P ₂	P ₃		L	M	A	B	*C	D	a	b	d
	cm ³ /giro [cm ³ /rev]	litri/min [litres/min]	bar	bar	bar	giri/min [rpm]	mm	mm	mm	mm	UNC	mm	mm	mm	mm
ALP3A-D-30	20	29	230	250	270	3500	65	130,5	26,19	52,37	3/8	27	22,23	47,63	19
ALP3A-D-33	22	31	230	250	270	3500	65,5	131,5	26,19	52,37	3/8	27	22,23	47,63	19
ALP3A-D-40	26	37	230	250	270	3300	67	134,5	26,19	52,37	3/8	27	22,23	47,63	19
ALP3A-D-50	33	48	230	250	270	3300	69,5	139,5	26,19	52,37	3/8	27	22,23	47,63	19
ALP3A-D-60	39	56	220	240	260	3000	71,5	143,5	26,19	52,37	3/8	27	22,23	47,63	19
ALP3A-D-66	44	62	210	230	250	2800	73	146,5	26,19	52,37	3/8	27	22,23	47,63	19
ALP3A-D-80	52	74	200	215	230	2500	76	152,5	26,19	52,37	3/8	27	22,23	47,63	19
ALP3A-D-94	61	87	190	205	220	2800	79	158,5	30,2	58,7	7/16	33	26,19	52,37	27
ALP3A-D-110	71	101	170	185	200	2500	82,5	165,5	30,2	58,7	7/16	33	26,19	52,37	27
ALP3A-D-120	78	112	160	175	190	2300	85	170,5	30,2	58,7	7/16	33	26,19	52,37	27
ALP3A-D-135	87	124	140	155	170	2000	88	176,5	30,2	58,7	7/16	33	26,19	52,37	27

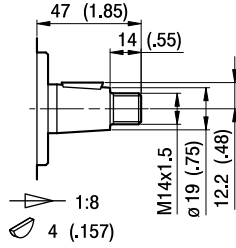
ALP3

FLANGE / FLANGES



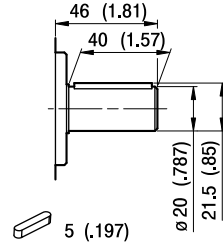
A

ALBERI / SHAFTS



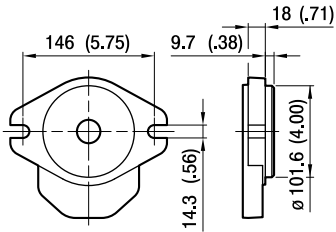
T0

Coppia Max
Max Torque 300 Nm

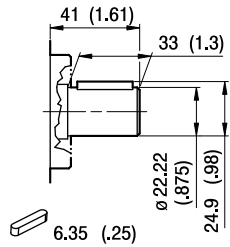


C0

Coppia Max
Max Torque 350 Nm

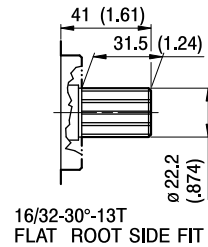


A



C1

Coppia Max
Max Torque 450 Nm

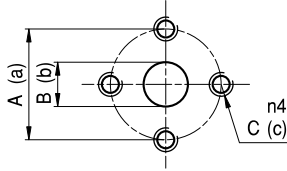


S1

Coppia Max
Max Torque 600 Nm

ALP3

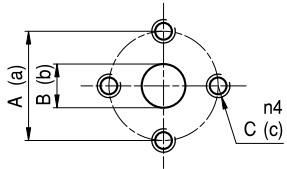
PORTE / PORTS



E

TIPO TYPE	ASPIRAZIONE INLET			MANDATA OUTLET		
	A	B	C	a	b	c
ALP3...30 ÷ ALP3...60	56	27	M10	56	19	M10
ALP3...66	51	27	M10	51	27	M10
ALP3...80	56	27	M10	56	27	M10
ALP3...94 ÷ ALP3...135	62	33	M10	51	27	M10

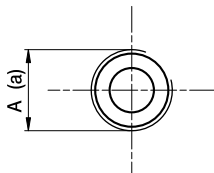
I valori delle coppie di serraggio delle viti presenti nel kit raccordo sono indicate a pag 57 (capitolo accessori).
Tightening torques of the fittings screws are specified on page 57 (accessories section).



EP

TIPO TYPE	ASPIRAZIONE INLET			MANDATA OUTLET		
	A	B	C	a	b	c
ALP3 ... 30 ÷ ALP3 ... 33	40	19	M8	40	19	M8
ALP3 ... 40 ÷ ALP3 ... 80	51	27	M10	40	19	M8

I valori delle coppie di serraggio delle viti presenti nel kit raccordo sono indicate a pag 57 (capitolo accessori).
Tightening torques of the fittings screws are specified on page 57 (accessories section).

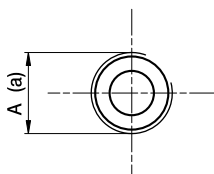


FG

TIPO TYPE	ASPIRAZIONE INLET	MANDATA OUTLET
	A	a
ALP3...30 ÷ ALP3...33	G3/4	G3/4
ALP3...40 ÷ ALP3...60	G1	G3/4
ALP3...66 ÷ ALP3...94	G1 1/4	G1
ALP3...110 ÷ ALP3...135	G1 1/2	G1 1/4

Raccordo G3/4 coppia di serraggio massima 60 Nm. Raccordo G1 coppia di serraggio massima 70 Nm. Raccordo G1 1/4 coppia di serraggio massima 80 Nm. Raccordo G1 1/2 coppia di serraggio massima 90 Nm. Consigliamo di richiedere conferma al fornitore del raccordo.

Tightening torques for G3/4 fitting: 60 Nm. Tightening torques for G1 fitting: 70 Nm. Tightening torques for G1 1/4 fitting: 80 Nm. Tightening torques for G1 1/2 fitting: 90 Nm. Please check with the fittings suppliers.



FC

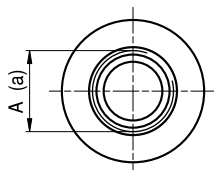
TIPO TYPE	ASPIRAZIONE INLET	MANDATA OUTLET
	A	a
ALP3...30 ÷ ALP3...33	Rc3/4	Rc3/4
ALP3...40 ÷ ALP3...60	Rc1	Rc3/4
ALP3...66 ÷ ALP3...94	Rc1 1/4	Rc1
ALP3...110 ÷ ALP3...135	Rc1 1/2	Rc1 1/4

Raccordo Rc3/4 coppia di serraggio massima 60 Nm. Raccordo Rc1 coppia di serraggio massima 70 Nm. Raccordo Rc1 1/4 coppia di serraggio massima 80 Nm. Raccordo Rc1 1/2 coppia di serraggio massima 90 Nm. Consigliamo di richiedere conferma al fornitore del raccordo.

Tightening torques for Rc3/4 fitting: 60 Nm. Tightening torques for Rc1 fitting: 70 Nm. Tightening torques for Rc1 1/4 fitting: 80 Nm. Tightening torques for Rc1 1/2 fitting: 90 Nm. Please check with the fittings suppliers.

ALP3

PORTE / PORTS



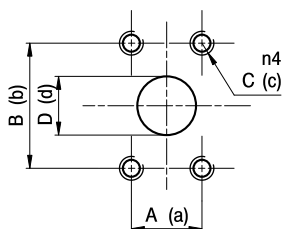
STANDARD SAE J1926/1

FA

TIPO TYPE	ASPIRAZIONE INLET	MANDATA OUTLET
	A	a
ALP3...30 ÷ ALP3...50	1 5/16-12 UNF	1 1/16-12 UNF
ALP3...60 ÷ ALP3...80	1 5/8-12 UNF	1 1/16-12 UNF
ALP3...94 ÷ ALP3...135	1 7/8-12 UNF	1 5/16-12 UNF

Raccordo 1 1/16-12 UNF coppia di serraggio massima 70 Nm. Raccordo 1 5/16-12 UNF coppia di serraggio massima 80 Nm. Raccordo 1 5/8-12 UNF coppia di serraggio massima 80 Nm. Raccordo 1 7/8-12 UNF coppia di serraggio massima 80 Nm. Consigliamo di richiedere conferma al fornitore del raccordo.

Tightening torques for 1 1/16-12 UNF fitting: 70 Nm. Tightening torques for 1 5/16-12 UNF fitting: 80 Nm. Tightening torques for 1 5/8-12 UNF fitting: 80 Nm. Tightening torques for 1 7/8-12 UNF fitting: 80 Nm. Please check with the fittings suppliers.

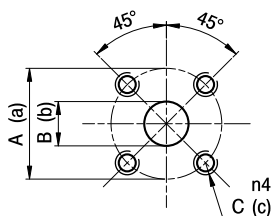


A

TIPO TYPE	ASPIRAZIONE INLET				MANDATA OUTLET			
	A	B	C	D	a	b	c	d
ALP3...30 ÷ ALP3...80	26,19	52,37	3/8-16 UNC	27	22,23	47,63	3/8-16 UNC	19
ALP3...94 ÷ ALP3...135	30,2	58,7	7/16-14 UNC	33	26,19	52,37	3/8-16 UNC	27

I valori delle coppie di serraggio delle viti presenti nel kit raccordo sono indicate a pag 57 (capitolo accessori).

Tightening torques of the fittings screws are specified on page 57 (accessories section).



D

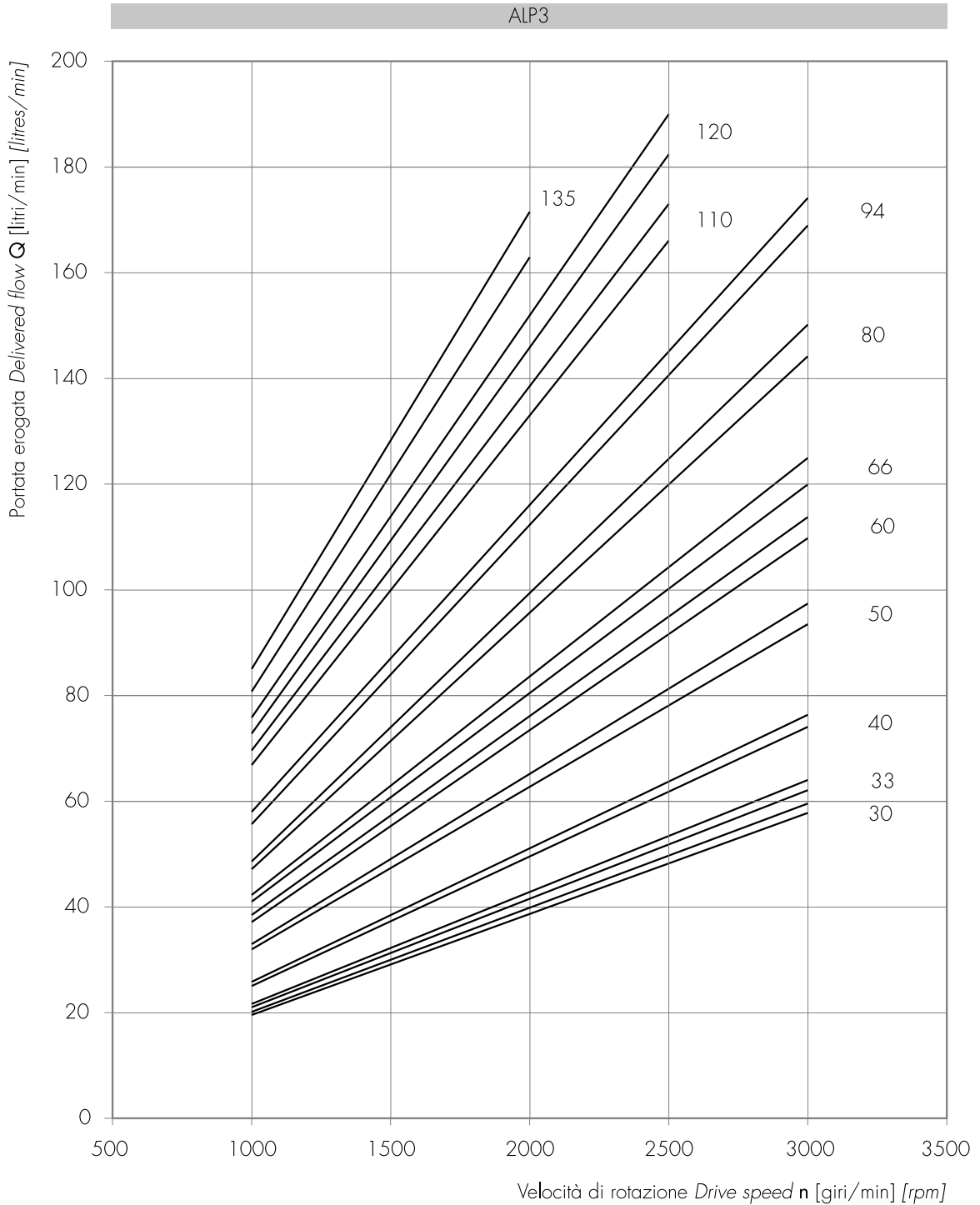
TIPO TYPE	ASPIRAZIONE INLET			MANDATA OUTLET		
	A	B	C	a	b	c
ALP3...30 ÷ ALP3...80	55	27	M8	55	19	M8

I valori delle coppie di serraggio delle viti presenti nel kit raccordo sono indicate a pag 57 (capitolo accessori).

Tightening torques of the fittings screws are specified on page 57 (accessories section).

ALP3 CURVE CARATTERISTICHE

ALP3 PERFORMANCE CURVES



Le curve sono state ottenute alla temperatura di 50°C, utilizzando olio con viscosità 30 cSt alle pressioni sotto riportate.

Each curve has been obtained at 50°C, using oil with viscosity 30 cSt at these pressure.

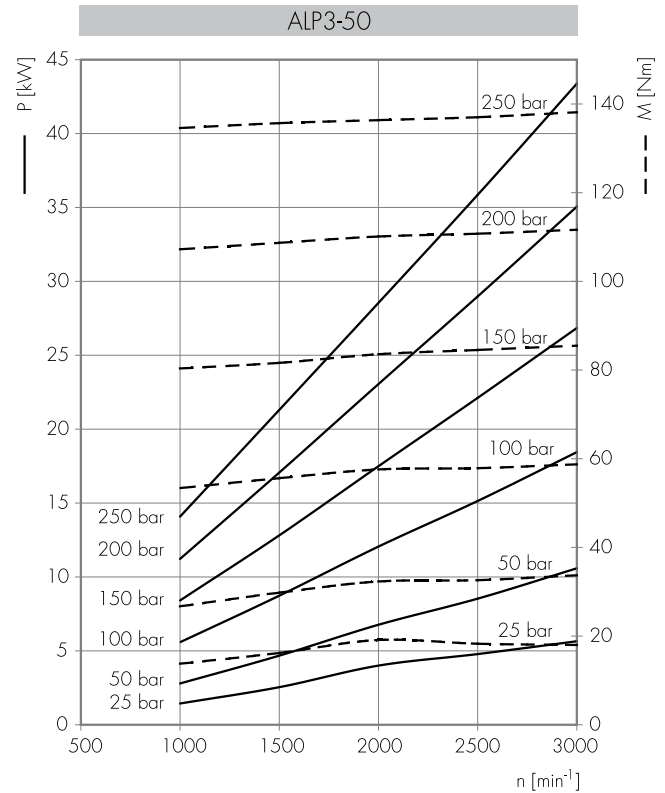
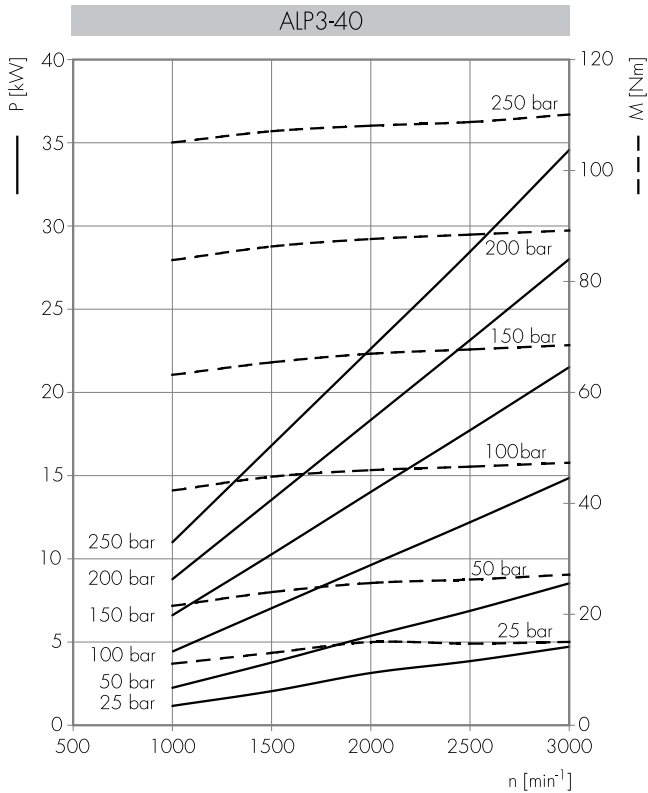
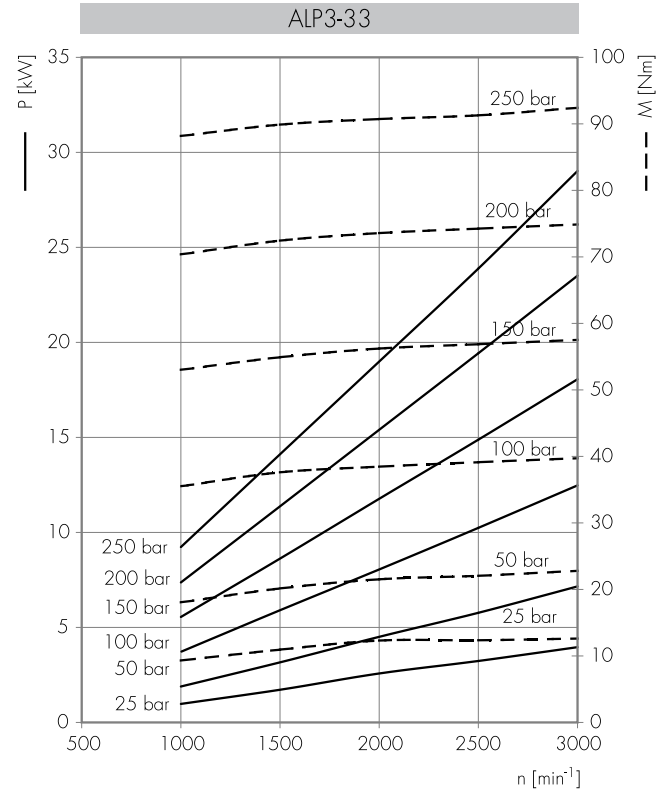
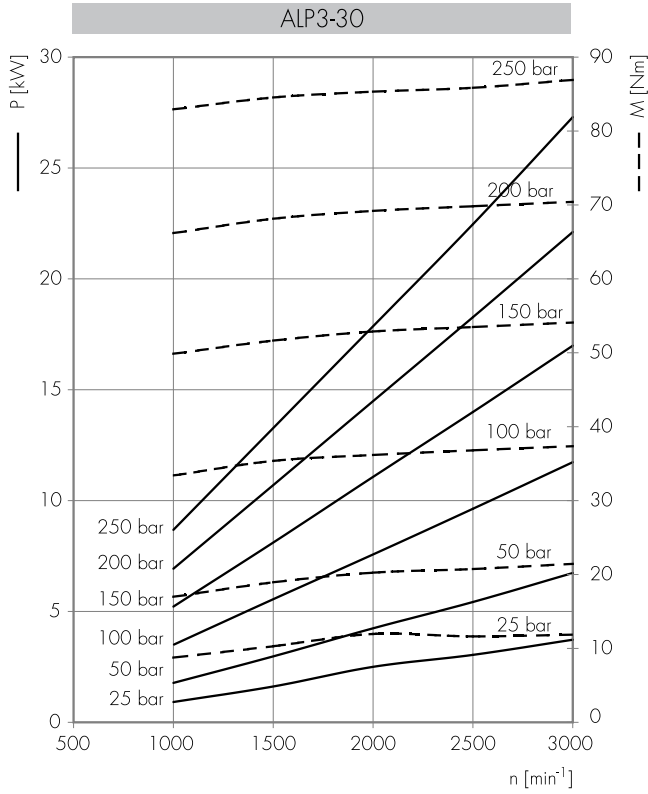
30 |
33 |— 25-250 bar
40 |

50 |
60 |— 25-240 bar
66 |

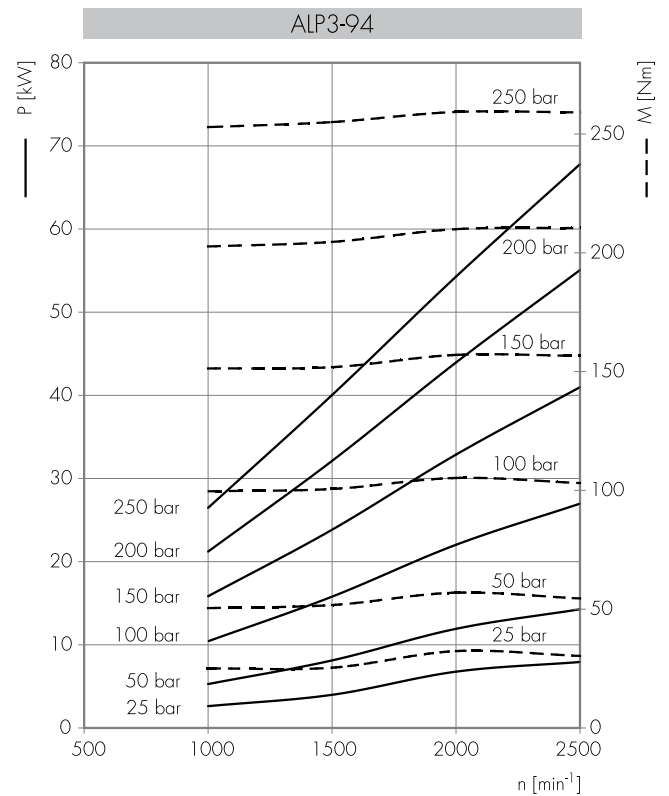
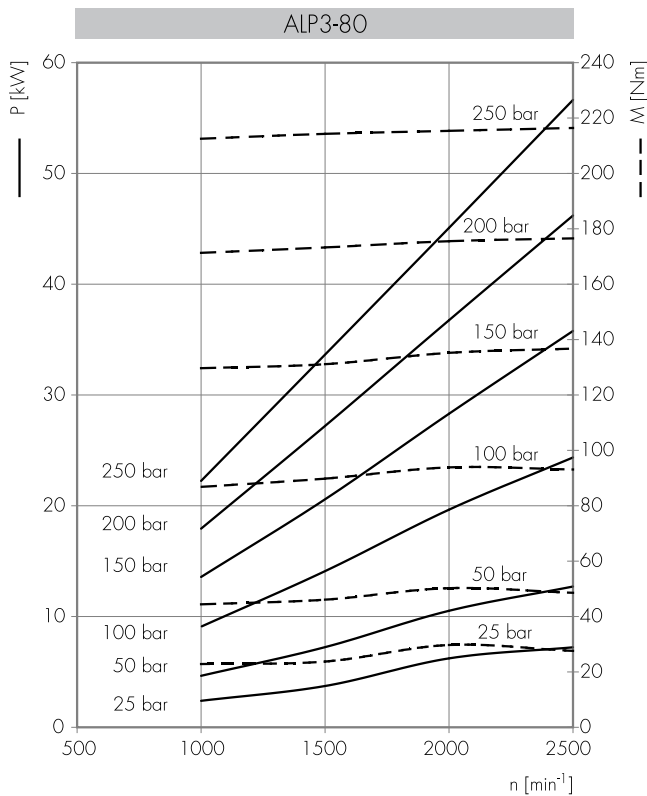
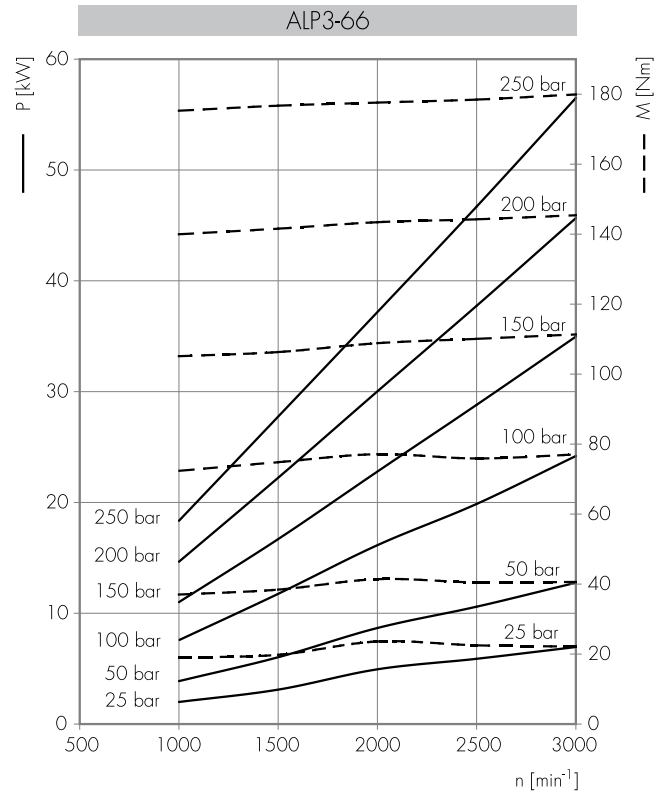
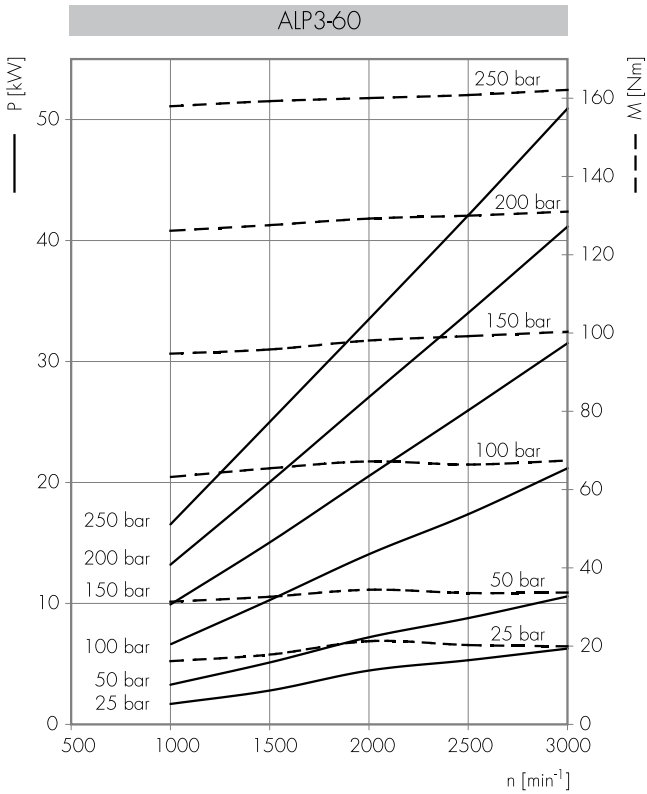
80 |— 25-220 bar
94 |— 25-200 bar

110 |— 25-180 bar
120 |— 25-170 bar
135 |— 25-150 bar

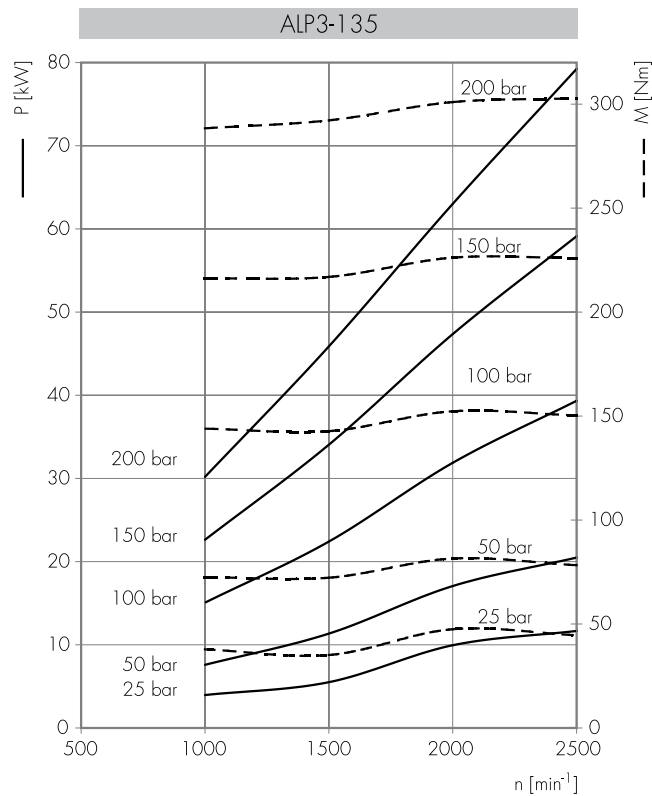
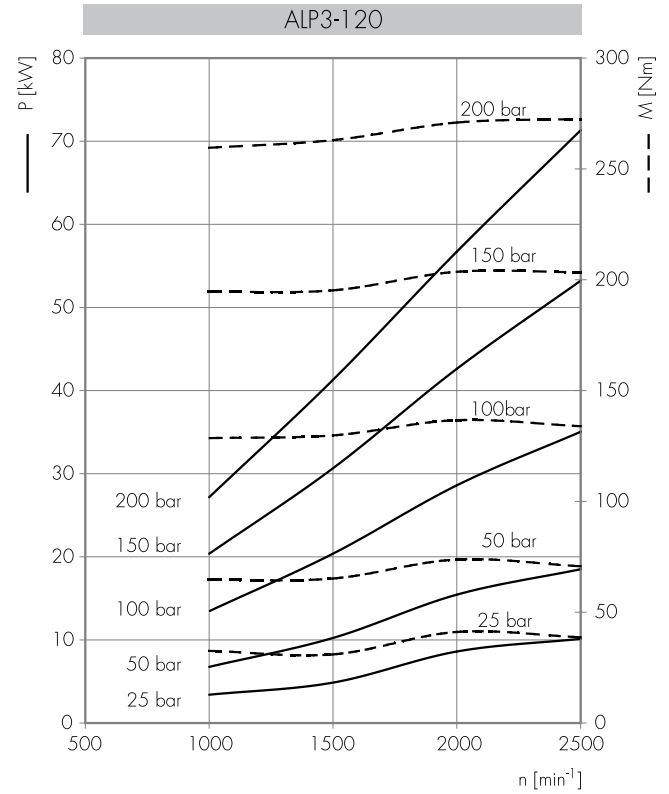
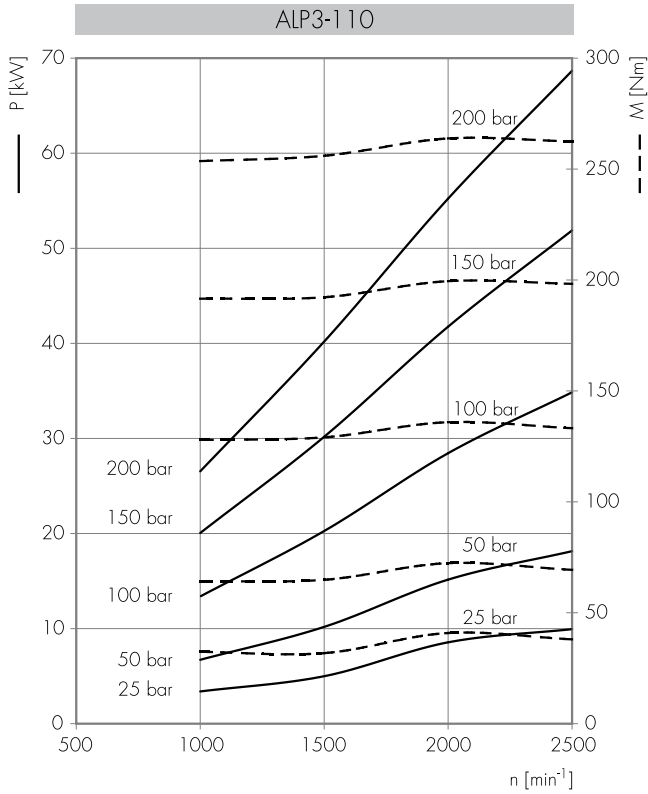
Potenza assorbita Absorbed power P [kW]
 Momento torcente assorbito Absorbed torque M [Nm]
 Velocità di rotazione Drive speed n [giri/min] [rpm]



Potenza assorbita Absorbed power P [kW]
 Momento torcente assorbito Absorbed torque M [Nm]
 Velocità di rotazione Drive speed n [giri/min] [rpm]



Potenza assorbita Absorbed power P [kW]
 Momento torcente assorbito Absorbed torque M [Nm]
 Velocità di rotazione Drive speed n [giri/min] [rpm]



ALP4

COME ORDINARE / HOW TO ORDER

ALP4	TIPO TYPE	ROTAZIONE ROTATION	TAGLIA SIZE	ALBERO* SHAFT*	PORTE* PORTS*	GUARNIZIONI* SEALS*	OPZIONI* OPTIONS*
	omit	D DESTRA CLOCKWISE	130				
	E	S SINISTRA COUNTER CLOCKWISE	160				
	A		190				
			220				
			250				
			270				
			300				

Guarnizioni / Seals

omit (T range = -10°C + 80°C)

V

...

Opzioni / Options

TR

...

(*) = campi da specificare se diversi dallo standard
"tipo pompa" / to be specified if different from
standard pump type

Tipi Pompa Standard / Pump Standard Types

omit = flangia europea + albero TO + porte E + guarnizioni standard / european flange + shaft TO + ports E + standard seal

E = flangia E + albero CO + porte A + guarnizioni standard / flange E + shaft CO + ports A + standard seal

A = flangia A + albero CO + porte A + guarnizioni standard / flange A + shaft CO + ports A + standard seal

Esempi / Examples:

ALP4-D-190 = rotazione destra, 128 cm³/giro, flangia europea, albero conico 1:8, porte flangiate tipo E, guarnizioni standard
clockwise rotation, 128 cm³/rev, european flange, 1:8 tapered shaft, flanged ports E types, standard seals

ALP4-D-190-SO = rotazione destra, 128 cm³/giro, flangia europea, albero scanalato (SO), porte flangiate tipo E, guarnizioni standard
clockwise rotation, 128 cm³/rev, european flange, 1:8 splined shaft (SO), flanged ports E types, standard seals

ALP4A-D-190 = rotazione destra, 128 cm³/giro, flangia SAE C 6 fori, albero cilindrico, porte flangiate tipo A, guarnizioni standard
clockwise rotation, 128 cm³/rev, SAE C 6 bolts flange, cylindrical shaft, flanged ports A types, standard seals

LE TAVOLE DI PRODOTTO RAPPRESENTANO I TIPI POMPA STANDARD PER MARZOCCHI POMPE. LE TAVOLE SINOTTICHE DI FLANGE, ALBERI E PORTE HANNO LO SCOPO DI RAPPRESENTARE TUTTE LE POSSIBILI CONFIGURAZIONI DI PRODOTTO. PER MAGGIORI DETTAGLI SULLE DISPONIBILITÀ E CONDIZIONI DI FORNITURA, CONSIGLIAMO DI INTERPELLARE IL NOSTRO UFFICIO TECNICO-COMMERCIALE.

THE PRODUCT DATA SHEETS SHOW OUR STANDARD MODEL TYPES. THE SYNOPSIS TABLES FOR FLANGES, SHAFTS AND PORTS SHOW ALL THE POSSIBLE CONFIGURATIONS. FOR FURTHER DETAILS ABOUT THE AVAILABILITY OF EACH CONFIGURATION PLEASE CONTACT OUR SALES AND TECHNICAL DEPT.

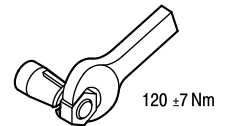
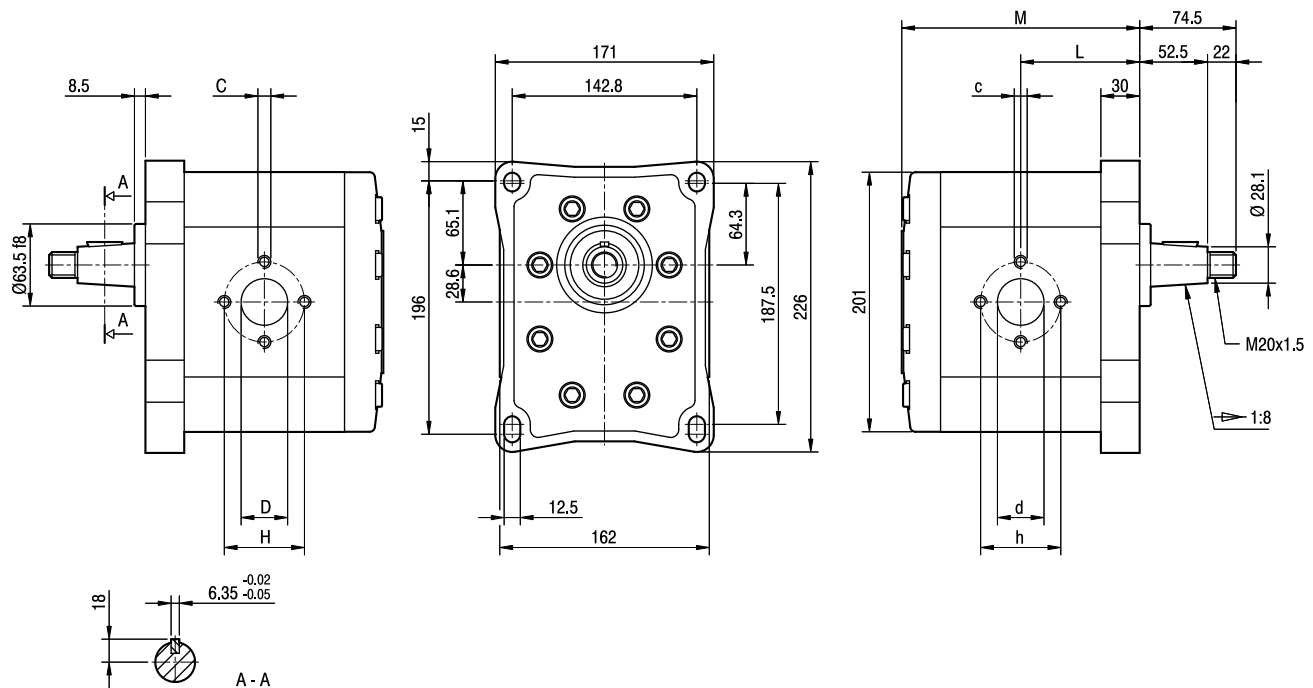
ALP4

Parti accessorie a corredo della pompa standard: linguetta a disco (codice 522263), dado M20x1.5 (codice 523019), rosetta elastica spaccata (codice 523008).
 Porte standard: filetti M10 e M12 profondità utile 21 mm.

Accessories supplied with the standard pump: woodruff key (code 522263), M20x1.5 hexagonal nut (code 523019), washer (code 523008).
 Standard ports: M10 and M12 threads depth 21 mm.

MANDATA
 OUTLET

ASPIRAZIONE
 INLET



TIPO TYPE	CILINDRATA DISPLACEMENT	PORTATA a 1500 giri/min FLOW at 1500 rev/min	PRESSIONI MASSIME MAX PRESSURE			VELOCITÀ MASSIMA MAX SPEED	DIMENSIONI DIMENSIONS							
			P ₁	P ₂	P ₃		L	M	c	C	d	D	h	H
	cm ³ /giro (cm ³ /rev)	litri/min (litres/min)	bar	bar	bar	giri/min (rpm)	mm	mm	mm	mm	mm	mm	mm	mm
ALP4-D-130	87	124	240	260	280	2800	92	184	M10	M10	36	30	62	56
ALP4-D-160	106	151	200	220	240	2300	96	192	M10	M10	36	30	62	56
ALP4-D-190	128	182	180	200	220	2500	100,5	201	M12	M10	45	36	72,5	62
ALP4-D-220	147	209	170	190	210	2200	104,5	209	M12	M10	45	36	72,5	62
ALP4-D-250	166	237	160	170	190	2000	108,5	217	M12	M10	45	36	72,5	62
ALP4-D-270	181	258	140	150	170	2400	111,5	223	M12	M12	56	45	92	72,5
ALP4-D-300	200	285	130	140	150	2400	115,5	231	M12	M12	56	45	92	72,5

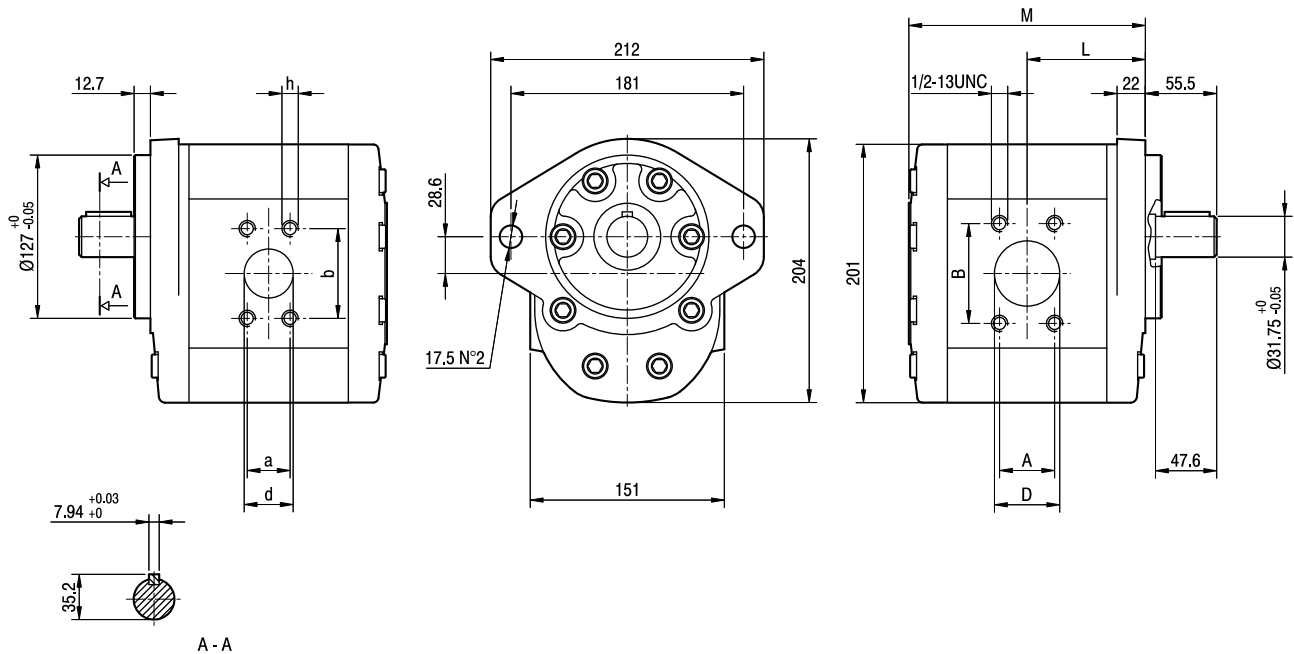
ALP4E

Parti accessorie a corredo della pompa standard: linguetta (codice 522262)
 Monta flangia 127-2 (C) secondo norma SAE J744c.
 Porte standard: filetti 7/16-14 UNC profondità utile 25 mm, filetti 1/2-13 UNC profondità utile 25 mm.

Accessories supplied with the standard pump: key (code 522262)
 Mounting flange 127-2 (C) in compliance with SAE J744c.
 Standard ports: 7/16-14 UNC threads depth 25 mm, 1/2-13 UNC threads depth 25 mm.

MANDATA
OUTLET

ASPIRAZIONE
INLET



TIPO TYPE	CILINDRATA DISPLACEMENT	PORTATA a 1500 giri/min FLOW at 1500 rev/min	PRESSIONI MASSIME MAX PRESSURE			VELOCITÀ MASSIMA MAX SPEED	DIMENSIONI DIMENSIONS								
			P ₁	P ₂	P ₃		L	M	A	B	D	a	b	d	h
	cm ³ /giro [cm ³ /rev]	litri/min [litres/min]	bar	bar	bar	giri/min [rpm]	mm	mm	mm	mm	mm	mm	mm	mm	UNC
ALP4E-D-130	87	124	240	260	280	2800	92	184	35,7	69,8	38	30,2	58,7	31,5	7/16
ALP4E-D-160	106	151	200	220	240	2300	96	192	42,8	77,7	51	35,7	69,8	38	1/2
ALP4E-D-190	128	182	180	200	220	2500	100,5	201	42,8	77,7	51	35,7	69,8	38	1/2
ALP4E-D-220	147	209	170	190	210	2200	104,5	209	42,8	77,7	51	35,7	69,8	38	1/2
ALP4E-D-250	166	237	160	170	190	2000	108,5	217	42,8	77,7	51	35,7	69,8	38	1/2
ALP4E-D-270	181	258	140	150	170	2400	111,5	223	42,8	77,7	51	35,7	69,8	38	1/2
ALP4E-D-300	200	285	130	140	150	2400	115,5	231	42,8	77,7	51	35,7	69,8	38	1/2

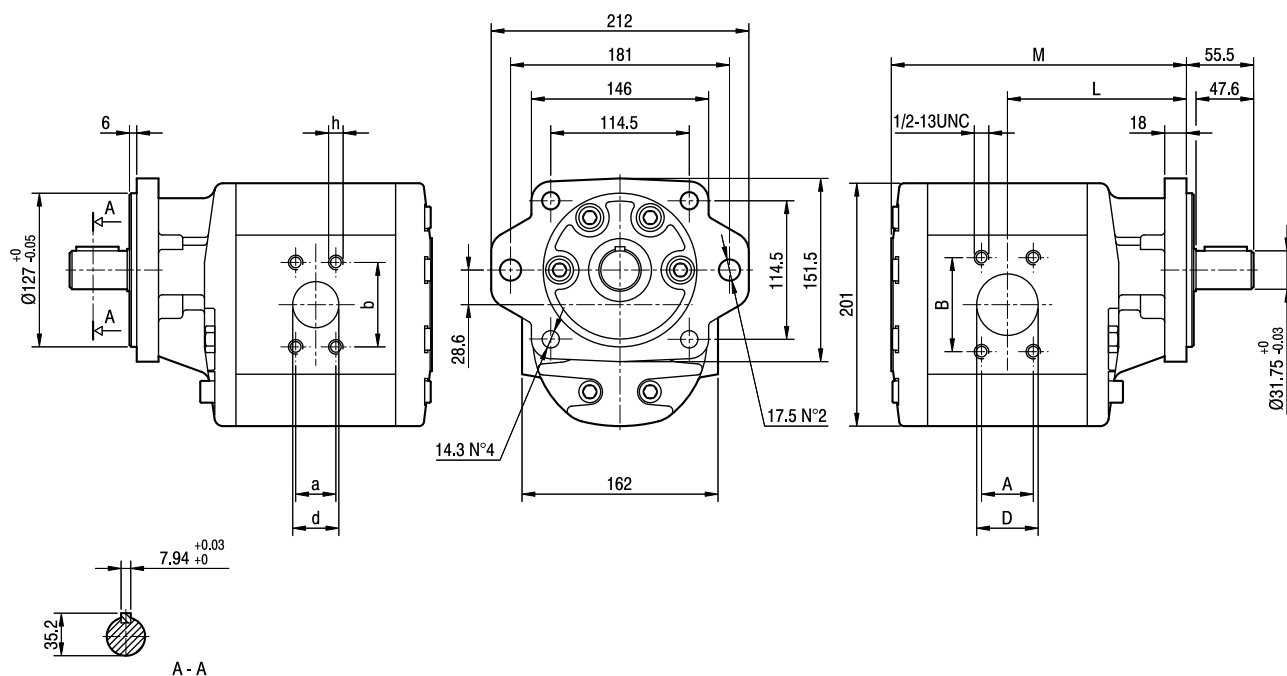
ALP4A

Parti accessorie a corredo della pompa standard: linguetta (codice 522262)
 Monta flangia 127-2/4 (C) secondo norma SAE J744c.
 Porte standard: filetti 7/16-14 UNC profondità utile 25 mm, filetti 1/2-13 UNC profondità utile 25 mm.

Accessories supplied with the standard pump: key (code 522262)
 Mounting flange 127-2/4 (C) in compliance with SAE J744c.
 Standard ports: 7/16-14 UNC threads depth 25 mm, 1/2-13 UNC threads depth 25 mm.

MANDATA
OUTLET

ASPIRAZIONE
INLET

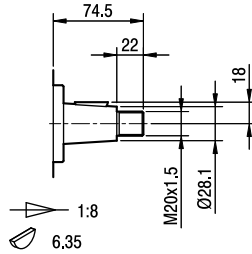
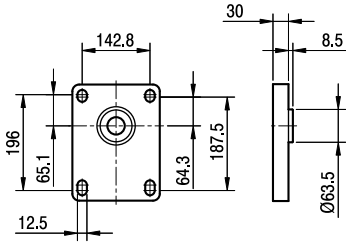


TIPO TYPE	CILINDRATA DISPLACEMENT	PORTATA a 1500 giri/min FLOW at 1500 rev/min	PRESSIONI MASSIME MAX PRESSURE			VELOCITÀ MASSIMA MAX SPEED	DIMENSIONI DIMENSIONS								
			P ₁	P ₂	P ₃		L	M	A	B	D	a	b	d	h
	cm ³ /giro [cm ³ /rev]	litri/min [litres/min]	bar	bar	bar	giri/min [rpm]	mm	mm	mm	mm	mm	mm	mm	mm	UNC
ALP4A-D-130	87	124	240	260	280	2800	144	236	35,7	69,8	38	30,2	58,7	31,5	7/16
ALP4A-D-160	106	151	200	220	240	2300	148	244	42,8	77,7	51	35,7	69,8	38	1/2
ALP4A-D-190	128	182	180	200	220	2500	152,5	253	42,8	77,7	51	35,7	69,8	38	1/2
ALP4A-D-220	147	209	170	190	210	2200	156,5	261	42,8	77,7	51	35,7	69,8	38	1/2
ALP4A-D-250	166	237	160	170	190	2000	160,5	269	42,8	77,7	51	35,7	69,8	38	1/2
ALP4A-D-270	181	258	140	150	170	2400	163,5	275	42,8	77,7	51	35,7	69,8	38	1/2
ALP4A-D-300	200	285	130	140	150	2400	167,5	283	42,8	77,7	51	35,7	69,8	38	1/2

ALP4

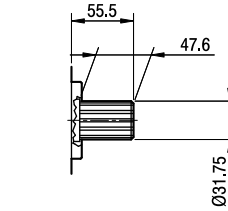
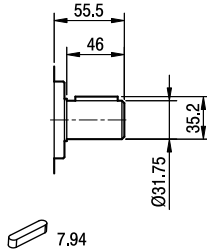
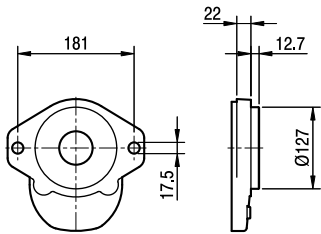
FLANGE / FLANGES

ALBERI / SHAFTS



T0

Coppia Max
Max Torque 550 Nm



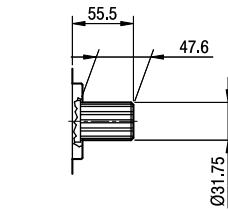
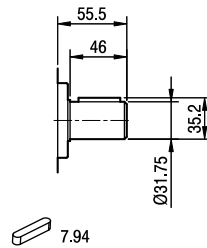
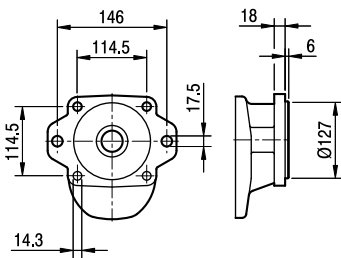
12/24-30°-14T
FLAT ROOT SIDE FIT

C0

Coppia Max
Max Torque 450 Nm

S1

Coppia Max
Max Torque 900 Nm



12/24-30°-14T
FLAT ROOT SIDE FIT

C0

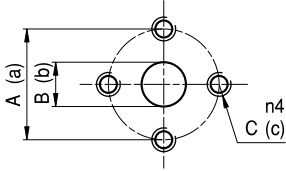
Coppia Max
Max Torque 450 Nm

S1

Coppia Max
Max Torque 900 Nm

ALP4A

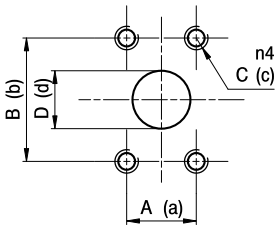
PORTE / PORTS



E

TIPO TYPE	ASPIRAZIONE INLET			MANDATA OUTLET		
	A	B	C	a	b	c
ALP4 ... 130 ÷ ALP4 ... 160	62	36	M10	56	30	M10
ALP4 ... 190 ÷ ALP4 ... 250	72,5	45	M12	62	36	M10
ALP4 ... 270 ÷ ALP4 ... 300	92	56	M12	72,5	45	M12

I valori delle coppie di serraggio delle viti presenti nel kit raccordo sono indicate a pag. 57 (capitolo accessori).
Tightening torques of the fittings screws are specified on page 57 (accessories section).



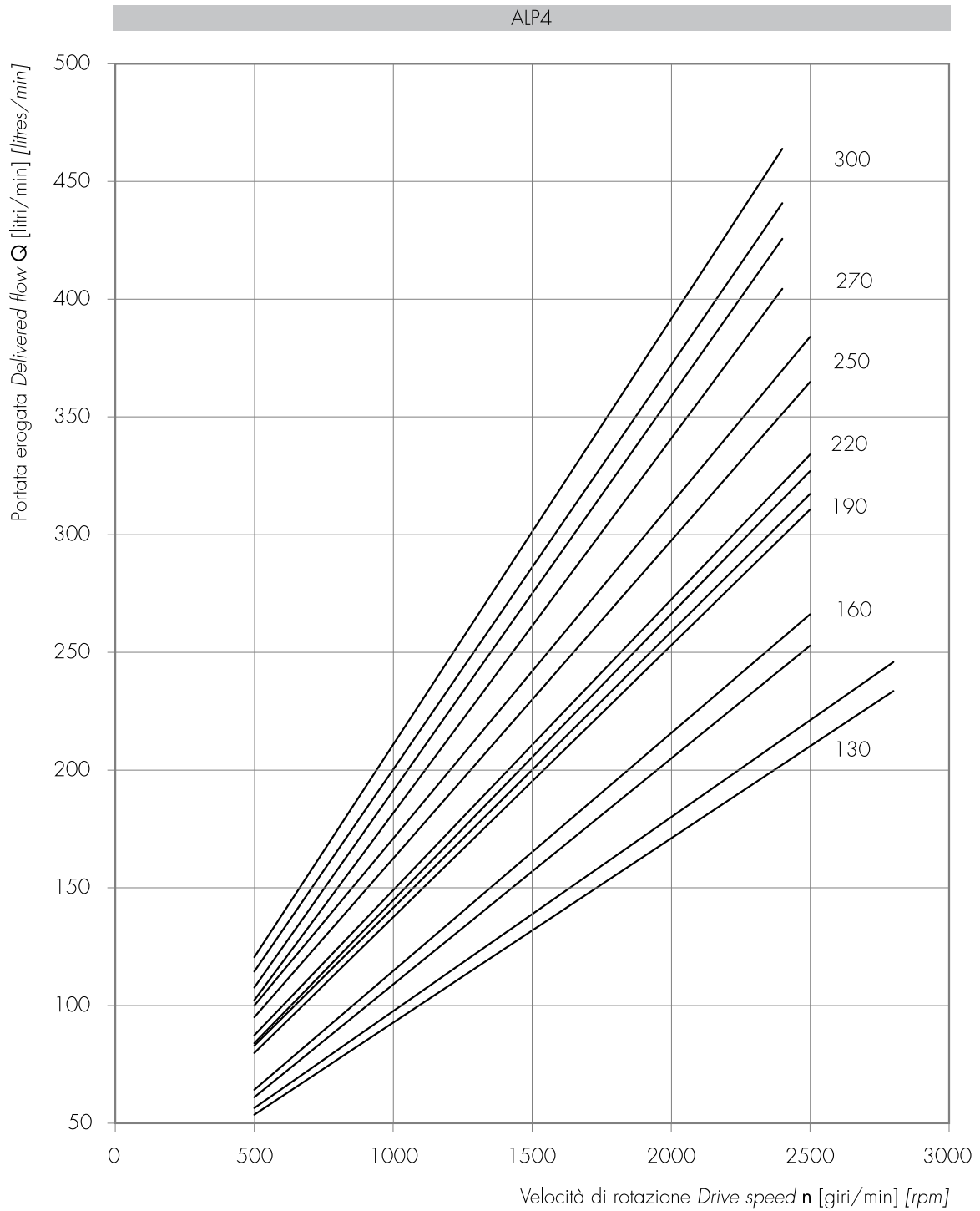
A

TIPO TYPE	ASPIRAZIONE INLET				MANDATA OUTLET			
	A	B	C	D	a	b	c	d
ALP4 ... 130	35,7	69,8	1/2-13 UNC	38	30,2	58,7	7/16-14 UNC	31,5
ALP4 ... 160 ÷ ALP4 ... 300	42,8	77,7	1/2-13 UNC	51	35,7	69,8	1/2-13 UNC	38

I valori delle coppie di serraggio delle viti presenti nel kit raccordo sono indicate a pag. 57 (capitolo accessori).
Tightening torques of the fittings screws are specified on page 57 (accessories section).

ALP4 CURVE CARATTERISTICHE

ALP4 PERFORMANCE CURVES



Le curve sono state ottenute alla temperatura di 50°C, utilizzando olio con viscosità 30 cSt alle pressioni sotto riportate.

Each curve has been obtained at 50°C, using oil with viscosity 30 cSt at these pressure.

130 |— 50-240 bar

190 |— 50-180 bar
220 |— 50-180 bar

270 |— 50-150 bar

160 |— 50-220 bar

250 |— 50-170 bar

300 |— 50-130 bar